



Nearshore and offshore co-occurrence of marine heatwaves and cold-spells



Robert W. Schlegel^{a,*}, Eric C.J. Oliver^{b,c}, Thomas Wernberg^d, Albertus J. Smit^a

^a Department of Biodiversity and Conservation Biology, University of the Western Cape, Private Bag X17, Bellville 7535, South Africa

^b ARC Centre of Excellence for Climate System Science, Australia

^c Institute for Marine and Antarctic Studies, University of Tasmania, Hobart, Australia

^d UWA Oceans Institute and School of Plant Biology, The University of Western Australia, Crawley, 6009 Western Australia, Australia

ARTICLE INFO

Article history:

Received 2 May 2016

Received in revised form 19 December 2016

Accepted 8 January 2017

Available online 10 January 2017

Keywords:

Extreme events

Co-occurrence

Remotely-sensed SST

In situ data

Climate change

Nearshore

ABSTRACT

A changing global climate places shallow water ecosystems at more risk than those in the open ocean as their temperatures may change more rapidly and dramatically. To this end, it is necessary to identify the occurrence of extreme ocean temperature events – marine heatwaves (MHWs) and marine cold-spells (MCSs) – in the nearshore (<400 m from the coastline) environment as they can have lasting ecological effects. The occurrence of MHWs have been investigated regionally, but no investigations of MCSs have yet to be carried out. A recently developed framework that defines these events in a novel way was applied to ocean temperature time series from (i) a nearshore *in situ* dataset and (ii) $\frac{1}{4}^\circ$ NOAA Optimally Interpolated sea surface temperatures. Regional drivers due to nearshore influences (local-scale) and the forcing of two offshore ocean currents (broad-scale) on MHWs and MCSs were taken into account when the events detected in these two datasets were used to infer the links between offshore and nearshore temperatures in time and space. We show that MHWs and MCSs occur at least once a year on average but that proportions of co-occurrence of events between the broad- and local scales are low (0.20–0.50), with MHWs having greater proportions of co-occurrence than MCSs. The low rates of co-occurrence between the nearshore and offshore datasets show that drivers other than mesoscale ocean temperatures play a role in the occurrence of at least half of nearshore events. Significant differences in the duration and intensity of events between different coastal sections may be attributed to the effects of the interaction of oceanographic processes offshore, as well as with local features of the coast. The decadal trends in the occurrence of MHWs and MCSs in the offshore dataset show that generally MHWs are increasing there while MCSs are decreasing. This study represents an important first step in the analysis of the dynamics of events in nearshore environments, and their relationship with broad-scale influences.

© 2017 Elsevier Ltd. All rights reserved.

1. Introduction

Over the past three decades, anthropogenically mediated warming has negatively affected marine and terrestrial ecosystems with far reaching consequences for humanity and natural ecological functioning. Although climate change is generally understood as a gradual long-term rise in global mean surface temperature (Stocker et al., 2013), which will continue for decades or centuries, it is generally the associated increase in frequency and severity of extreme events that affects humans and ecosystems in the short-term (Easterling et al., 2000). Impacts of extreme events such as floods, wind storms, tropical cyclones, heatwaves and cold-spells

are often sudden with catastrophic consequences. The recognition to focus more on the extremes and less on the background mean state has emerged as a critical direction of climate change research (Jentsch et al., 2007).

'Heatwaves' usually refer to atmospheric phenomena where vague definitions such as "a period of abnormally and uncomfortably hot [...] weather" are invoked (Glickman, 2000), but there are also precise definitions based on statistical properties and other metrics of the temperature record that are relative to location and time of year (e.g. Meehl, 2004; Alexander et al., 2006; Fischer and Schär, 2010; Fischer et al., 2011; Perkins and Alexander, 2013). As the definitions for heatwaves have increased, so too have the investigations of heatwaves in the ocean (e.g. Mackenzie and Schiedek, 2007; Selig et al., 2010; Sura, 2011; Lima and Wethey, 2012; DeCastro et al., 2014). Well-known marine heatwaves (MHWs) have occurred in the Mediterranean in

* Corresponding author.

E-mail address: 3503570@myuwc.ac.za (R.W. Schlegel).

2003 (Black et al., 2004; Olita et al., 2007; Garrabou et al., 2009), off the coast of Western Australia in 2011 (Feng et al., 2013; Pearce and Feng, 2013; Wernberg et al., 2013), in the north west Atlantic Ocean in 2012 (Mills et al., 2012; Chen et al., 2014, 2015) and more recently the “Blob” in the north east Pacific Ocean (Bond et al., 2015). The extreme temperatures from these events have had negative impacts on the local ecology of the regions in which they occur. For example, the 2003 Mediterranean heatwave may have affected up to 80% of the gorgonian fan colonies in some areas (Garrabou et al., 2009), and the 2011 event off the west coast of Australia is now known to have caused a 100 km range contraction of temperate kelp forests in favor of seaweed turfs and a tropicalisation of reef fishes (Wernberg et al., 2016).

Although the consequences of these anomalously warm events have been widely publicized, the events themselves have until recently not been objectively characterized. In part, this has been due to the lack of a consistent definition and metrics. In response to this need, Hobday et al. (2016) developed a definition of a MHW as “a prolonged discrete anomalously warm water event that can be described by its duration, intensity, rate of evolution, and spatial extent,” and in doing so have derived statistical metrics that quantify these properties. For example, the count of MHWs within a time series and their maximum and cumulative intensity are quantifiable parameters that can be calculated in an objective and consistent manner irrespective of geographical location. The focus of this paper is on marine thermal events that are anomalous with respect to the seasonal climatology as per the Hobday et al. (2016) definition. They may be anomalously warm events, or anomalously cold (marine cold-spells, MCSs; introduced here). While MHWs are becoming reasonably well known by virtue of their increasing count and intensity, MCSs have received less recognition. Whereas extreme hot events may be demonstrably damaging to organisms and ecosystems, extreme cold events also have the potential to negatively impact organisms and ecosystems (Lirman et al., 2011). In both cases their drivers and dynamics, offshore as well as in the nearshore (<400 m from the coastline), remain poorly understood.

MCSs are projected to become less frequent under future climatic scenarios, but there are also examples of them becoming more frequent in some localities (e.g. Gershunov and Douville, 2008; Matthes et al., 2015). They are frequently lethal to marine organisms (Woodward, 1987) and are known to have caused mass fish (Gunter, 1941, 1951; Holt and Holt, 1983) and invertebrate (Gunter, 1951; Crisp, 1964) kills, the death of juvenile and sub-adult manatees (O’Shea et al., 1985; Marsh et al., 1986) and coral bleaching (Lirman et al., 2011). Cold temperatures are very important in setting species population distribution limits, particularly limiting their range north- or southwards towards higher latitudes (Firth et al., 2011), and the timing of the onset of growing seasons (Jentsch et al., 2007). It is easy to imagine how population-level consequences might aggregate to drive whole ecosystem responses (e.g. Kreyling et al., 2008; Rehage et al., 2016). Indeed, the range contractions of ecosystem engineer species such as mussels have been shown to relate to MCSs (Firth et al., 2011, 2015).

Although we understand that the sea surface temperature (SST) of the upper mixed layer is influenced by oceanic and atmospheric processes (see Eq. (1) of Deser et al., 2010), there is by no means a good understanding of how these processes are modulated by local- vs. broad-scale influences, thus resulting in nearshore MHWs and MCSs. Some of the MCSs known to have impacted populations were caused by atmospheric cold-spells affecting the intertidal and coastal biota locally (Gunter, 1941; Firth et al., 2011). We hypothesise that these localized events are manifestations of extreme atmospheric cold weather phenomena situated over the coast resulting in rapid heat loss from coastal waters. On the other hand, we also hypothesize that broader-scale teleconnections may also

affect the thermal properties and dynamics of coastal systems. For example, large-scale atmospheric-oceanographic coupling is being affected by global warming, which is projected to cause the intensification of upwelling favorable winds and consequently the intensification and increasing count of upwelling events (see García-Reyes et al., 2015 for a review of this and alternative hypotheses). It is therefore possible that the development of some nearshore MCSs may be attributed to an intensification of upwelling. MHWs at any scale likely originate directly from atmosphere-ocean heat transfer as in the Mediterranean Sea (e.g. Garrabou et al., 2009) or from advection, i.e., the transport of warm water due to currents such as what happened off Western Australia in 2011 (Feng et al., 2013; Benthuysen et al., 2014), the NW Atlantic in 2012 (Mills et al., 2012; Chen et al., 2014, 2015) and potentially off SE Australia in 2016. Because MHWs and MCSs are both able to effect ecosystem change, a mechanistic understanding of their drivers may be useful for conservation and management purposes. To this end our study serves as a constructive first step to understand the prevalence of anomalous thermal events with respect to forcing mechanisms at different scales.

Hobday et al. (2016) applied their MHW framework to the $\frac{1}{4}^{\circ}$ NOAA Optimally Interpolated SST dataset (hereafter referred to as OISST; Reynolds et al., 2007), but warned users to be cognizant that different data sets would provide different kinds of information pertaining to heatwaves. Our study applied this MHW (MCS) definition to datasets of nearshore *in situ* (local-scale) and offshore gridded OISST (broad-scale) temperature time series collected at different locations along coastlines influenced by contrasting ocean currents – the Benguela Current, an eastern boundary upwelling system, and the Agulhas Current, a western boundary current – and locally modified by regional aspects of the coastal bathymetry, geomorphology and other smaller scale coastal features. Having assessed these systems within a framework that coupled local- and broad-scale features permitted us to assess how MHWs (MCSs) developed in coastal regions. Specifically, we aimed to assess the significance of MHWs (MCSs) within the context of the datasets inherent differences, and examine the various dynamical properties that then emerged out of the regional oceanographic context and out of the local-scale modifications of the regional ocean features as they approached the coast. In doing so, the aim was to provide some insights into possible mechanisms that determine the nature and origin of MHWs (MCSs) within regionally distinct ocean/coastal sections. We hypothesized that (i) nearshore local-scale MHW events are coupled with offshore broad-scale thermal patterns; (ii) MCSs originate at the local-scale in the nearshore *in situ* dataset as isolated incidents decoupled from broader-scale patterns; (iii) different coastal sections, each variously influenced by interactions between local- and broad-scale processes, display different dynamics (timing, count, duration and intensity) of MHWs (MCSs); and (iv) the count of warm (cold) events increases (decreases) with time under a regime of climate change. The effect of atmospheric forcing on nearshore events was considered but not assessed within the scope of this study.

2. Methods

2.1. Study region

The variety of oceanographic features around the ca. 3100 km long South African coast provides a natural laboratory for the potential effects of different ocean forcing mechanisms on the occurrence of MHWs and MCSs. Annual mean (\pm standard deviation; SD) coastal seawater temperatures range from 12.3 ± 1.2 °C at the western limit near the Namibian border (Site 1) to 24.4 ± 2.0 °C in the east near the Mozambican border (Site 21).

Our study sites covered this full range (Fig. 1). We classified the coast into three sections based on their major oceanographic features, their temperature characteristics, and aspects of the underlying continental shelf. The west coast section is dominated by the Benguela Current, which forms an Eastern Boundary Upwelling System (EBUS) (Hutchings et al., 2009). Seasonal upwelling is maintained by prevailing south-easterly trade winds and low temperatures are especially noticeable at upwelling cells over a relatively narrow continental shelf in the region from the Cape Peninsula to Cape Columbine. The west coast represents a cool temperate regime, with a range of monthly mean temperatures at generally intermediate between cold temperate and warm temperate (Lüning et al., 1990). The warm temperate east coast section is strongly influenced by the warm south-westerly flowing Agulhas Current, which hugs tightly along the narrow continental shelf (except for the Natal Bight) (Lüning et al., 1990). This stretch of coast is spatially homogeneous with respect to temperature and characterized by a moderate amount of seasonal variation. Although the Agulhas Current retroflects back into the southern Indian Ocean (Hutchings et al., 2009) just south of the much wider and cooler Agulhas Bank (Roberts, 2005), its influence regularly extends as far west as False Bay (Sites 5–21; Fig. 1). Between the west and east coasts is the south coast section overlying the Agulhas Bank. Although also warm temperate, the south coast is fundamentally different from the other coastal sections in that it is dominated by not one strong current, but rather consists of a broad continental shelf on which the interplay of the Agulhas and Benguela Currents form a ‘mixing-pot’ between two oceans, as well as hosting an attendant array of complex coastal processes that modify the already thermally variable waters overlying the Agulhas Bank (Lutjeharms et al., 2003; Roberts, 2005; Hutchings et al., 2009). It experiences a much larger range in annual temperature and variability compared to the west and east coast sections, which is in part influenced by the retention and cooling of Agulhas

Current water on the bank, the presence of some current-driven upwelling cells along this coastal section (Sites 15–17) (Roberts, 2005), and from the effects of capes and embayments throughout the region. A more detailed description of these three coastal sections may be found in Smit et al. (2013).

2.2. Temperature data

The *in situ* seawater temperature dataset used in this study was comprised of 127 records of daily measurements of up to 40 years with a mean duration of *ca.* 19 years. These *in situ* time series are generally shorter than the recommended 30 year minimum for the characterization of MHWs (Hobday et al., 2016) and have occasional gaps of missing data. However, there is a clear benefit of using *in situ* data over satellite data as they provide a more accurate representation of the thermal characteristics near the coast where satellite measurements do not capture maximum and minimum temperatures well (e.g. Smale and Wernberg, 2009; Castillo and Lima, 2010). For example, satellite SST data along the coast of South Africa have shown warm biases as high as 6 °C over *in situ* temperatures in the nearshore environment Smit et al. (2013). All time series from the *in situ* dataset under 10 years in duration were excluded from this study to ensure at least one decade of data was used to estimate the climatology required for the identification of MHWs (MCSs). Time series missing more than 10% of their daily temperature measurements were also excluded, leaving a total of 21 time series. These were then classified into the three coastal sections detailed above. Metadata for the selected time series, including location, duration, and the coastal sections they were aggregated into can be found in Table S1.

The remotely sensed temperature dataset used in this study were the daily $\frac{1}{4}^{\circ}$ NOAA Optimally Interpolated SST (OISST; Reynolds et al., 2007) derived from the Advanced Very High Resolution Radiometer (AVHRR). To create time series from these OISST

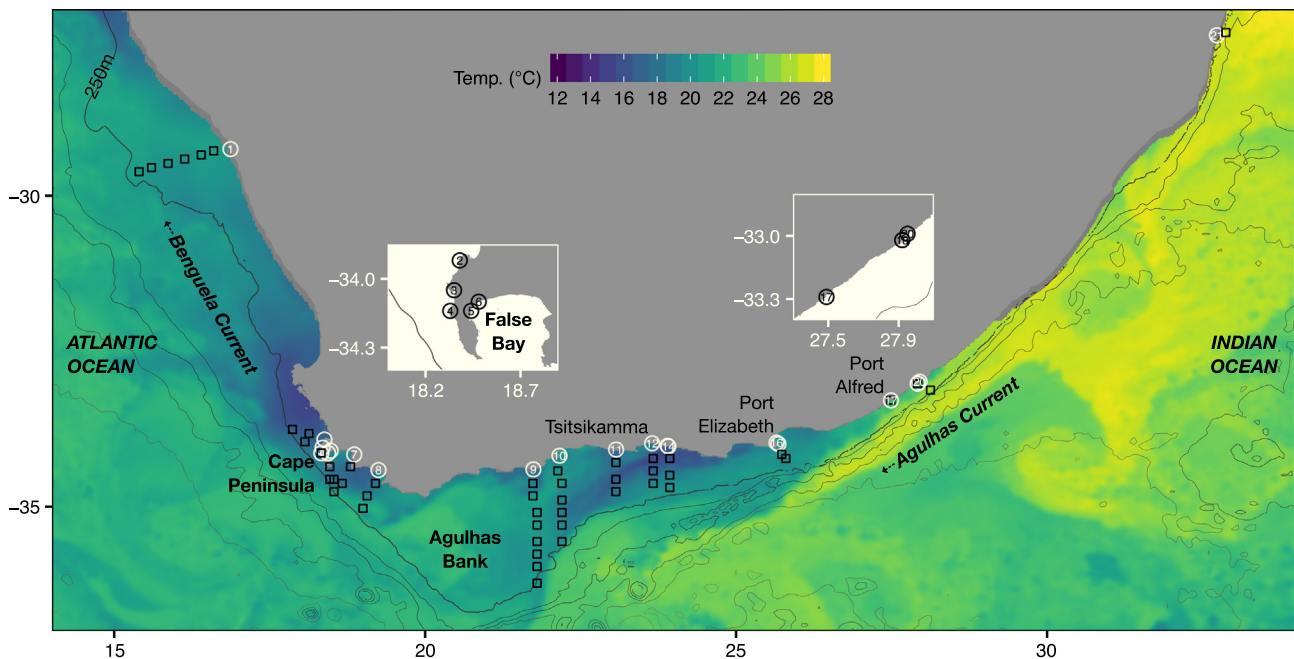


Fig. 1. Map of southern Africa showing the bathymetry (only the 250 m isobath is labelled), the location of *in situ* temperature time series shown with circles and approximations of the pixels used along the shore-normal transects from the daily $\frac{1}{4}^{\circ}$ NOAA OISST (Reynolds et al., 2007) shown with black boxes. The JPL G1SST 1 km blended SST field shows the state of the ocean on 2016-02-14; this image was selected as it clearly shows the full range of ocean processes around southern Africa. The Agulhas Current along the east coast of the country (Sites 18–21) is visualized here in a yellowish color as a jet of relatively warmer water projecting in a south-westerly direction, and hugging the continental shelf. The blueish patches north of the Cape Peninsula along the west coast (Sites 1–4) represent upwelled water. Some upwelled water on the south coast (Sites 5–17) may also be present around Sites 14 (Tsitsikamma) and 15–16 (Port Elizabeth). The inset maps show detail of the Cape Peninsula/False Bay area and the Port Alfred region where site labels are obscured due to overplotting of symbols. (For interpretation of the references to color in this figure legend, the reader is referred to the web version of this article.)

data representing offshore mesoscale temperatures and also comparable against the *in situ* time series, shore-normal transects extending to the 200 m isobath were drawn from each of the 21 sites where *in situ* time series were available. Temperature values from the OISST data were then extracted at each of the roughly 25×25 km pixels along these transects, shown as black boxes in Fig. 1. Where the shelf was less than 25 km wide (Sites 17–21) the nearest ‘ocean pixel’ to the *in situ* time series coordinate was used. The daily temperatures for each pixel from the OISST dataset within each of the 21 shore-normal transects were meaned to create offshore time series that could be compared against the near-shore *in situ* time series from which each transect was drawn. Offshore transects were used to generate the time series this way as they better represent the mesoscale temperatures we were interested in comparing against the coastal events. Had we simply used the nearest OISST pixel to generate time series to compare against the *in situ* data this would only draw a comparison between the two different data types at the coast, and not the mesoscale activity in the ocean. These 21 OISST time series could then be analyzed for MHWs (MCSs) in the same way as the *in situ* data (see below). Note that the OISST time series had valid data covering 1982–2015 which did not match exactly with the individual *in situ* sites. The full lengths of the OISST time series were used to create the climatology against which their MHWs (MCSs) could be calculated, rather than matching the shorter lengths of the *in situ* time series, so as to better follow the methodology found in Hobday et al. (2016).

2.3. Defining and calculating MHWs and MCSs

MHWs are defined here following Hobday et al. (2016) as ‘discrete prolonged anomalously warm water events in a particular location.’ MCS are defined in the same manner as MHWs with the exception of being ‘anomalously cold water events’.

The algorithm developed by Hobday et al. (2016) does so by finding the occasions that SST exceeds a threshold in the probability distribution of the data (i.e. relative to the 10th or 90th percentiles) calculated based on an 11-day wide moving mean smoother centered on each Julian day at each site (or pixel in the case of gridded data). These events are atypical relative to the normal climatology by definition, and various metrics that define their properties may be calculated, including, but not limited to, the number of events per year, their duration, and the mean, maximum and cumulative intensity above (below) the threshold (Hobday et al., 2016). The 90th (10th) percentile was used in our study for the threshold of events, rather than the 95th (5th) or 99th (1st) so as to allow for the detection of a greater number of anomalous events. This is an important consideration as it is not only the very largest events that may pose a threat to local ecosystems. Starting from the 3 day minimum duration set for atmospheric heatwaves in Perkins and Alexander (2013), different minimum lengths for the definition of marine events were tested for by Hobday et al. (2016). They found that a minimum length of 5 days allowed for more uniform global results in event detection; therefore, we have used this 5 day minimum length in our study, too. Because our *in situ* time series were of differing durations, with many under the proscribed 30 years, we calculated the climatology over all available years; in the case of the OISST data, climatologies were calculated over a fixed 33-year base period (1982–2015). Furthermore, discrete events with well-defined start and end dates but with ‘breaks’ between events lasting ≤ 2 days followed by subsequent ≥ 5 day events were considered as continuous events (Hobday et al., 2016). After the events were defined, a set of metrics (Table 1) were calculated including maximum and mean intensity (measured as anomalies relative to the cli-

matological mean, in °C), duration (time from start to end dates, in days), and cumulative intensity (the integrated intensity over the duration of the event, analogous to degree-heating-days; °C-days). MCS intensities are calculated as negative values (i.e. anomalies) and are reported in the text as such. When comparing MHW and MCS intensities the absolute values of these metrics were used.

A Python script (<https://github.com/ecjoliver/marineHeatWaves>; see Hobday et al., 2016) was used to calculate the individual MHWs (MCSs) for both the *in situ* and OISST time series. After the individual events were recorded, mean annual values for the metrics seen in Table 1 were calculated for each year of each time series. This provided two different sets of measurements for the extreme events that will be referred to specifically throughout this paper. ‘Annual’ data refer to the annual means of events for each year of each time series whereas ‘event’ data refer to the individually calculated events within each time series.

Because MHWs (MCSs) were calculated relative to percentile exceedances, rather than absolute definitions such as periods with temperatures above an arbitrary fixed temperature threshold, any time of year could have experienced a MHW (MCS). This is an important and necessary consideration to make as, for example, unusually warm waters that occur during the winter months of a year, the time when many species need cold water for effective spawning/spore release, can have a negative effect on the recruitment success of that population for the year (Wernberg et al., 2011).

2.4. Detecting co-occurrence of coastal and offshore events

In order to better understand the potential impact offshore mesoscale phenomena had on local coastal events, the proportion of MHWs (MCSs) that co-occurred between the two datasets was calculated for each matched time series. This was initially done by taking each event (warm and cold) within an *in situ* time series and looking for an event in the matched OISST time series that occurred within a certain period of time before the *in situ* date. These co-occurrence proportions were used to describe how often the mesoscale oceanography off the coast may have led to extreme events that occurred locally along the coast. All events that occurred outside of the dates shared between the matched time series were removed from this calculation. The sum of OISST events found to occur within the shared date window was then divided by the sum of events in the *in situ* time series that occurred during that same period to produce a co-occurrence proportion. The proportions of co-occurrence were then recalculated controlling for the size of the lag window used when comparing the two different datasets for concurrent events, as well as the directionality used for this comparison. In other words, a range of window sizes from 2 to 14 days were used for each site to see how far apart events generally occurred and the lag period used was also

Table 1

Metrics of MHWs and their descriptions as proposed by Hobday et al. (2016). In the case of MCSs, values were calculated with respect to the 10th percentile.

Name [unit]	Definition
Count [No. events per year]	n : number of MHWs per year
Duration [days]	D : Consecutive period of time that temperature exceeds the threshold
Maximum intensity [°C]	i_{max} : highest temperature anomaly value during the MHW
Mean intensity [°C]	i_{mean} : mean temperature anomaly during the MHW
Cumulative intensity [°C days]	i_{cum} : sum of daily intensity anomalies over the duration of the event

applied after the *in situ* events, allowing us to see how often coastal events led the offshore events.

In addition to controlling for the duration and direction of lag, the sizes of the individual events were factored into the calculations of co-occurrence proportion. This was accomplished by ranking the events within each time series in steps of 10th percentiles by cumulative intensity. Comparisons were then made between matched sites with smaller events progressively removed until only the largest events were being compared. This allowed us to isolate the proportion of co-occurrence found within each site that was caused by smaller events that occurred at similar times as large events, which were more likely to have co-occurred randomly, and not an indication of a teleconnection between the datasets.

The top three MHWs (MCSs) for each *in situ* and OISST time series as defined by cumulative intensity were also noted in order to visually compare the co-occurrence of events in detail, both within and between the different datasets.

2.5. Decadal trends in MHWs and MCSs

Given that the anthropogenic forcing of climate change has increased mean ocean temperatures over the past few decades (Stocker et al., 2013), it stands to reason that, as a function of the 90th and 10th percentiles, the larger MHWs would likely be near the end of the time series and the larger MCSs near the beginning. This can be tracked visually by looking at the top three warm and cold events for each time series. Given that the OISST time series are greater than 30 years in duration it is possible to discern the long term trends within the data apart from the noise of any inter-decadal patterns (Schlegel and Smit, 2016). Using generalized linear models (Poisson with *log-link*), the decadal trend in the annual count of MHWs (MCSs) were calculated for all OISST time series as well as the *in situ* time series over 30 years in duration. The 17 *in situ* time series under 30 years were cut in half and the sum of the annual count of both warm and cold events for each half was calculated. Using a series of general linear hypotheses (Hothorn et al., 2008) we tested the significant differences between the count data in the first and second halves of the time series for the overall count of MHWs (MCSs) as well as each coastal section. The sum of MHWs (MCSs) in the second half of each time series was divided by the sum of those in the first to produce proportional values of event occurrence that could be used to compare the different coastal sections.

3. Results

3.1. Event metrics

Using series of general linear hypotheses (Hothorn et al., 2008) to look for differences in the metrics of MHWs (MCSs) between datasets and between coastal sections (Table 2) revealed significant differences in the count of MHWs (MCSs) between the *in situ* and OISST datasets, with the OISST dataset displaying more events of both kinds (MHWs: $t = -5.37$, $p < 0.01$; MCSs: $t = -5.28$, $p < 0.01$). There were no differences in the number of warm or cool events within either of the datasets, nor in the number of MHWs (MCSs) between coasts.

MHWs (MCSs) in the OISST dataset were of greater duration than in the *in situ* dataset (MHWs: $t = -2.34$, $p < 0.05$; MCSs: $t = -3.31$, $p < 0.01$). Comparing events between coasts within the *in situ* dataset, MCSs along the east coast were shorter than along the south ($t = 5.41$, $p < 0.01$) or west coasts ($t = 2.06$, $p < 0.05$); MHWs showed the same response, with the duration along the east coast less than along the south ($t = 3.79$, $p < 0.01$) or west coasts ($t = 2.67$, $p < 0.01$). In the OISST dataset, MCSs along the east coast were only significantly shorter than those on south coast ($t = 2.83$, $p < 0.01$); MHWs on the east coast were shorter than those on the south ($t = 6.01$, $p < 0.01$) and west coasts ($t = 3.79$, $p < 0.01$). A comparison of the duration of MHWs against MCSs within coast and dataset showed that the durations of the two event types were identical. The one exception being along the east coast within the OISST dataset where MCSs were longer than MHWs ($t = -2.70$, $p < 0.01$).

The *in situ* dataset yielded more intense MHWs ($t = 19.80$, $p < 0.01$) and MCSs ($t = 14.19$, $p < 0.01$) than the OISST dataset. Looking at the difference in intensity of events within the dataset, MCSs were more intense than MHWs in the OISST dataset ($t = -4.10$, $p < 0.01$). There were also differences in the intensity of MHWs and MCSs between coasts within a dataset. Within the *in situ* dataset, the intensity of event types was greater along the south coast for both MHWs (south vs. east: $t = -2.58$, $p < 0.01$; south vs. west: $t = 3.28$, $p < 0.01$) and MCSs (south vs. east: $t = 5.48$, $p < 0.01$; south vs. west: $t = -6.66$, $p < 0.01$). More intense MCSs were present in the OISST dataset on the south coast compared to the east ($t = -2.15$, $p < 0.05$), whereas MHWs were less intense along the east compared to the south ($t = 3.01$, $p < 0.01$) or west coasts ($t = 2.18$, $p < 0.05$). Focusing on differences between coasts and within datasets, MHWs in the *in situ* dataset were more intense than MCSs along the west ($t = 4.48$, $p < 0.01$) and east

Table 2

The mean (\pm SD) values for event count, duration and mean intensity from the annual data for MHWs and MCSs for each coastal section as calculated from the *in situ* (A) and OISST (B) time series. The aforementioned annual data were averaged across all years for all time series within each respective coast to produce the mean values shown. Lower case letters indicate if any of the coastal sections differ *within* the same dataset and event type, with metrics sharing the same letter being statistically indistinguishable from one-another. For example, the duration of MHWs on the east coast in the *in situ* data were significantly less than MHWs on the west and south coasts, which were not significantly different. The upper case letters indicate if the coastal sections differ *between* the datasets, but *within* coast and event type. For example, the count of MCSs on the west and east coasts were not significantly different whereas the count of MCSs on the south coast in the OISST dataset was significantly greater than in the *in situ* dataset.

Coast	MHW			MCS		
	Count [n]	Duration [days]	Mean intensity [°C]	Count [n]	Duration [days]	Mean intensity [°C days]
A – <i>in situ</i>						
All	1.6 \pm 1.8 ^{-A}	9.3 \pm 5.1 ^{-A}	2.65 \pm 0.79 ^{-A}	1.5 \pm 1.7 ^{-A}	9.0 \pm 5.1 ^{-A}	-2.79 \pm 1.09 ^{-A}
West	1.8 \pm 1.9 ^{aA}	9.1 \pm 3.9 ^{aA}	2.86 \pm 0.90 ^{aA}	1.5 \pm 1.9 ^{aA}	8.5 \pm 5.2 ^{aA}	-2.32 \pm 0.58 ^{aA}
South	1.5 \pm 1.8 ^{aA}	9.8 \pm 6.1 ^{aA}	2.50 \pm 0.65 ^{bA}	1.5 \pm 1.6 ^{aA}	9.7 \pm 5.5 ^{aA}	-3.08 \pm 1.22 ^{bA}
East	1.5 \pm 1.7 ^{aA}	7.7 \pm 2.2 ^{bA}	2.85 \pm 0.89 ^{aA}	1.6 \pm 1.6 ^{aA}	7.1 \pm 1.9 ^{bA}	-2.37 \pm 0.67 ^{aA}
B – OISST						
All	2.2 \pm 2.1 ^{-B}	10.2 \pm 5.4 ^{-A}	1.72 \pm 0.33 ^{-B}	2.2 \pm 2.6 ^{-B}	10.2 \pm 5.1 ^{-B}	-1.83 \pm 0.52 ^{-B}
West	2.1 \pm 1.8 ^{aA}	10.9 \pm 6.7 ^{aA}	1.75 \pm 0.41 ^{aB}	2.3 \pm 2.7 ^{aA}	9.8 \pm 6.6 ^{adA}	-1.87 \pm 0.61 ^{adB}
South	2.2 \pm 2.1 ^{aB}	10.6 \pm 5.5 ^{aA}	1.74 \pm 0.29 ^{aB}	2.1 \pm 2.7 ^{aB}	10.7 \pm 5.0 ^{aA}	-1.79 \pm 0.45 ^{aB}
East	2.5 \pm 2.3 ^{aA}	8.3 \pm 2.4 ^{bA}	1.64 \pm 0.33 ^{bb}	2.2 \pm 2.2 ^{aA}	9.4 \pm 3.4 ^{dA}	-1.93 \pm 0.61 ^{dB}

coasts ($t = 3.06$, $p < 0.01$), whereas MCS were more intense than MHWs along the south coast ($t = -5.66$, $p < 0.01$). A coastal difference in intensity of MHWs and MCSs in the OISST dataset was only seen along the east coast ($t = -4.36$, $p < 0.01$), with MCSs being greater.

The mean annual statistics shown in Table 2 give a broad overview of the events that occurred along the coasts; however, an examination of the largest MHWs and MCSs provided a clearer picture as to which coastal sections showed the most intense events. The ranking of these events was based on the cumulative intensity metric as explained in Table 1. To calculate the mean cumulative intensity of all events it was necessary to use the individual event data, and not the annual mean data used for Table 2. Doing so for MHWs from both datasets showed a significant difference ($t = 7.68$, $p < 0.01$) in the mean (\pm SD) cumulative intensities with the *in situ* dataset (26.11 ± 24.37 °C-days) having greater cumulative intensities than in the OISST dataset (18.65 ± 15.10 °C-days). The mean (\pm SD) cumulative intensities for MCSs between the two datasets were also significantly different ($t = 2.99$, $p < 0.01$) with the *in situ* events (26.45 ± 24.25 °C-days) being greater than the OISST events (23.17 ± 23.49 °C-days).

3.2. Patterns in mean cumulative intensity

The three largest (greatest cumulative intensity) MHWs within the *in situ* dataset were all recorded along the south coast (Table 3). The cumulative intensity of the three largest events along the west coast were less than the greatest three south coast events, but greater than the largest three MHWs from the east coast. This is due in part to the events on the south coast having had greater durations than the other two coastal sections, which influenced the cumulative intensity metric. As with the MHWs, the largest three MCSs from the *in situ* data were also on the south coast (Table 3). The west coast had the next largest three events and the east coast the smallest. The south coast MCSs had greater durations than the MCSs from the other coastal sections, but were less pronounced than the MHWs.

The pattern seen in the *in situ* dataset of the largest MHWs and MCSs having occurred on the south, west and east coasts respectively was not repeated with the OISST dataset. Whereas the single largest MHW occurred on the south coast in the OISST data, the three largest MHWs from the west coast were larger than the second and third largest events from the south coast (Table 3). The

Table 3
The three largest MHWs and MCS per coast from the *in situ* (A, B) and OISST (C, D) data. The coast column shows in which coastal section the event occurred. The site column gives the name of the site, as seen in Table S1, which gives the index number necessary to find its location along the coast in Fig. 1. The start date column gives the day on which the event began and the duration [days] column shows how many days the event lasted for. The mean intensity and cumulative intensity columns are explained in Table 1.

Coast	Site	Start date	Duration [days]	Mean intensity [°C]	Cumulative intensity [°C-days]
<i>in situ</i>					
A – MHW					
West	Sea Point	1996-01-04	40	3.08	123.20
West	Sea Point	2005-05-21	39	2.56	99.66
West	Sea Point	1975-12-30	38	2.62	99.41
South	Muizenberg	1999-12-01	98	3.17	310.30
South	Mossel Bay	1993-06-25	97	1.77	171.30
South	Muizenberg	1999-10-20	35	4.47	156.40
East	Nahoon Beach	1995-10-14	18	5.18	93.31
East	Eastern Beach	1985-12-27	19	3.33	63.18
East	Orient Beach	1990-06-25	12	3.80	45.59
B – MCS					
West	Sea Point	1990-06-23	44	-2.88	-126.60
West	Sea Point	1983-06-10	39	-2.84	-110.90
West	Sea Point	2000-11-28	23	-3.70	-85.04
South	Muizenberg	1984-07-14	63	-2.92	-183.70
South	Muizenberg	1992-03-24	56	-2.78	-155.60
South	Ystervarkpunt	2000-05-11	51	-2.94	-150.10
East	Sodwana	2004-02-12	17	-3.25	-55.20
East	Orient Beach	1984-03-31	13	-3.73	-48.44
East	Orient Beach	1995-12-6	15	-3.01	-45.13
<i>OISST</i>					
C – MHW					
West	Sea Point	1992-01-21	39	2.96	115.60
West	Hout Bay	1992-01-20	36	3.15	113.50
West	Kommetjie	2004-10-29	53	2.03	107.40
South	Knysna	1992-05-3	50	2.41	120.40
South	Fish Hoek	2004-10-30	53	1.92	101.60
South	Pollock Beach	1994-03-27	31	3.19	99.05
East	Nahoon Beach	2006-10-21	25	1.81	45.34
East	Eastern Beach	2000-06-24	26	1.58	41.12
East	Orient Beach	2000-06-24	26	1.58	41.12
D – MCS					
West	Kommetjie	2010-12-13	54	-3.92	-211.90
West	Hout Bay	2010-12-25	41	-4.06	-166.30
West	Sea Point	2010-12-25	41	-3.78	-154.90
South	Hamburg	1984-02-5	65	-3.91	-254.20
South	Storms River Mouth	1982-03-13	60	-2.79	-167.30
South	Tsitsikamma East	1982-03-13	60	-2.79	-167.30
East	Eastern Beach	2010-12-26	32	-2.90	-92.85
East	Orient Beach	2010-12-26	32	-2.90	-92.85
East	Eastern Beach	1984-02-24	22	-3.97	-87.26

three largest MHWs from the east coast were again smaller than those from the other coasts. Assigning the largest MCSs from the OISST dataset to either the south or west coasts was not possible due to an inconsistent pattern here. The east coast MCSs from the OISST dataset were however consistently the smallest three events. All of the coastal sections in the OISST dataset had at least two of their largest MCSs occurring at similar times at different sites. This is a level of co-occurrence that the *in situ* data did not show.

As well as having had significantly different cumulative intensities, Fig. 2 shows that the three largest events within each time series in the OISST dataset often occurred at different times from those seen in the *in situ* dataset. In addition, the OISST events showed a greater amount of co-occurrence with events detected at neighboring coastal stations than the corresponding *in situ* time series did.

The daily temperatures on the dates of the largest MHW (MCS) from the west and south coasts in the *in situ* dataset are shown concurrently with the daily temperatures from the OISST time series on matching dates in Fig. 3. When these largest events were occurring in the *in situ* data, the temperatures in the OISST data did not show similarly intense events.

3.3. Co-occurrence proportions

The proportion of co-occurrence found for MHWs (MCSs) between the datasets for each site can be seen in Figs. 4 and 5 respectively. When using the lag windows both before and after the occurrence of an *in situ* event to compare the *in situ* and OISST events, increasing the width of the lag window from 2 to 14 days caused the mean proportion of co-occurrence for all sites to

increase linearly for MHWs (0.09–0.38) and MCSs (0.10–0.30). Using these same constraints, the south coast sites had the largest mean increase in co-occurrence for MHWs (0.10–0.45) and MCSs (0.11–0.34), whereas the west coast sites showed the smallest increase for MHWs (0.07–0.28) and MCSs (0.08–0.19). With all variables controlled for in the same manner, the co-occurrence proportions between the different coastal sections were not significantly different for MHWs or MCSs at 2 day nor 14 day lags ($p \geq 0.12$).

The directionality of the lag window affected the proportion of co-occurring events. Comparing all events within a 14 day lag window before the *in situ* event gave higher mean (\pm SD) proportions of co-occurrence for MHWs (0.22 ± 0.13) than for the same lag window after the *in situ* event (0.18 ± 0.10). This same comparison for MCSs showed that the lag window before the *in situ* event (0.16 ± 0.09) had a slightly lower proportion of co-occurrence than the lag window after the *in situ* event (0.17 ± 0.08). When the smaller events were screened from comparison and only the largest half of the events used (50th percentile), the difference in mean (\pm SD) co-occurrence proportions for MHWs lessened to 0.16 ± 0.11 before the *in situ* event and 0.15 ± 0.12 after. The mean (\pm SD) co-occurrence proportion of MCSs at this level was less when using a lag window before the *in situ* event at 0.05 ± 0.08 than for a lag window after at 0.08 ± 0.08 .

There was no co-occurrence in the paired time series for the largest MCSs, whereas four of the 21 paired time series showed co-occurrence for their largest MHWs (Fig. 4). Interestingly, these four paired time series were on the south coast and three of the four showed co-occurrence for their largest MHW when the *in situ* event preceded the OISST event.

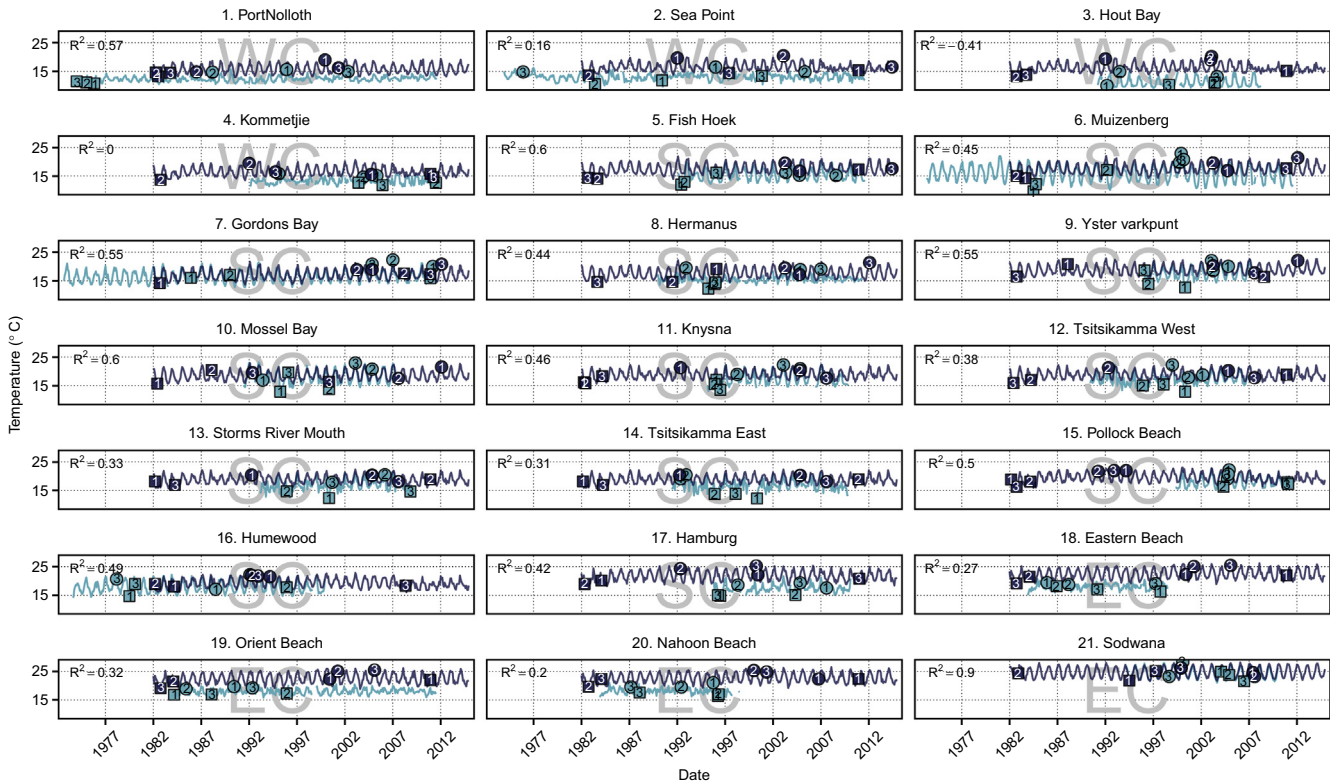


Fig. 2. The daily temperature values for each *in situ* time series (light blue) used in this study and the corresponding OISST time series (dark blue) extracted for comparison as seen in Fig. 1. The top three MHWs are indicated by circles (with the rank inside) for each site as judged by greatest cumulative intensity. The top three MCSs for each site are indicated by squares (with the rank inside). Sites 1–4 represent the west coast (WC), sites 5–17 represent the south coast (SC) and sites 18–21 represent the east coast (EC). The coefficient of determination (R²) values for the daily temperatures between each paired set of time series are displayed in the upper left corner of each panel. (For interpretation of the references to color in this figure legend, the reader is referred to the web version of this article.)

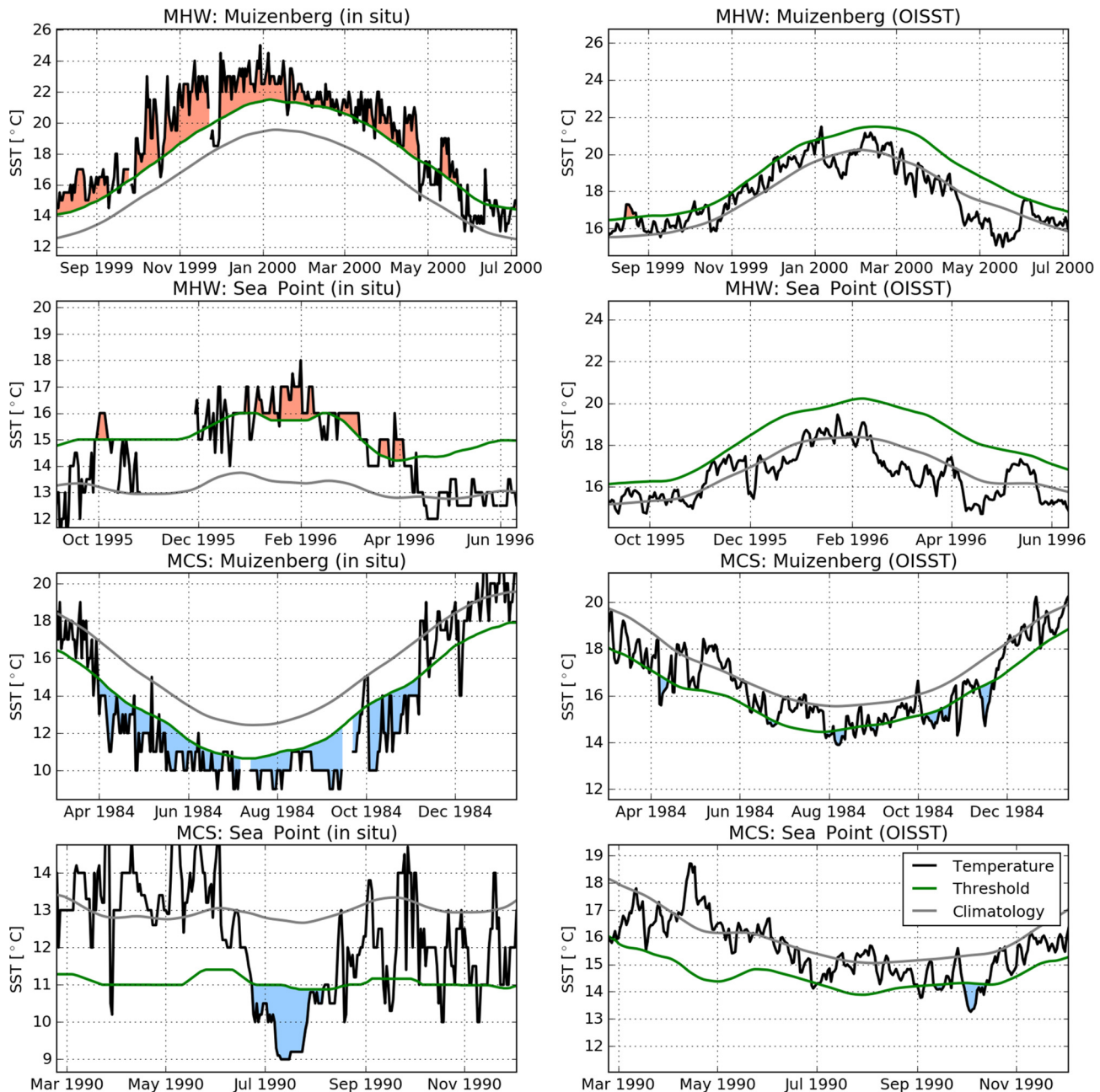


Fig. 3. The temperature values from the *in situ* and OISST data during the largest MHW and MCS from the south and west coasts respectively from the *in situ* data. The left column shows the *in situ* temperature values during the event while the right column shows the OISST temperature values occurring on the same dates. The top row shows the largest MHW that occurred on the south coast while the second row shows the largest MHW that occurred on the west coast. The bottom two rows show the largest *in situ* MCS that occurred on the south and west coasts respectively.

3.4. Decadal trends in MHWs and MCSs

The decadal trends in MHWs (MCSs) calculated for each OISST time series are given in Table 4. The mean (\pm SD) decadal trend for MHW occurrence in the OISST dataset is $0.2 \pm 0.1 \text{ dec}^{-1}$ across all sites and $-0.3 \pm 0.3 \text{ dec}^{-1}$ for MCSs. The decadal trends in MHW occurrence were less in the colder Benguela-fed west coast than the warmer Agulhas-driven east coast with the mean (\pm SD) decadal MHW trend on the west coast being $0.1 \pm 0.1 \text{ dec}^{-1}$, the south coast being $0.2 \pm 0.2 \text{ dec}^{-1}$ and the east coast being $0.3 \pm 0.1 \text{ dec}^{-1}$. Just as MHWs occurred more frequently per decade on the east coast than the west, the count of MCSs decreased more on the east coast than the west.

The decadal trend of MCSs on the west coast is $0.0 \pm 0.2 \text{ dec}^{-1}$, $-0.4 \pm 0.2 \text{ dec}^{-1}$ on the south coast and $-0.5 \pm 0.2 \text{ dec}^{-1}$ on the east coast.

Of the four *in situ* time series that reached the 30 year minimum length, the mean (\pm SD) decadal trend for MHWs is $0.2 \pm 0.4 \text{ dec}^{-1}$ and $-0.1 \pm 0.3 \text{ dec}^{-1}$ for MCSs. There were two sites from the west coast and two from the south, excluding the east coast from a possible calculation of decadal change for *in situ* MHWs (MCSs). The mean (\pm SD) decadal trend for MHWs (MCSs) on the west coast is $0.0 \pm 0.3 \text{ dec}^{-1}$ ($-0.2 \pm 0.5 \text{ dec}^{-1}$) and $0.4 \pm 0.4 \text{ dec}^{-1}$ ($0.0 \pm 0.3 \text{ dec}^{-1}$) on the south. Note that none of the decadal trends for MCSs from the > 30 year *in situ* time series from the west coast were significant.

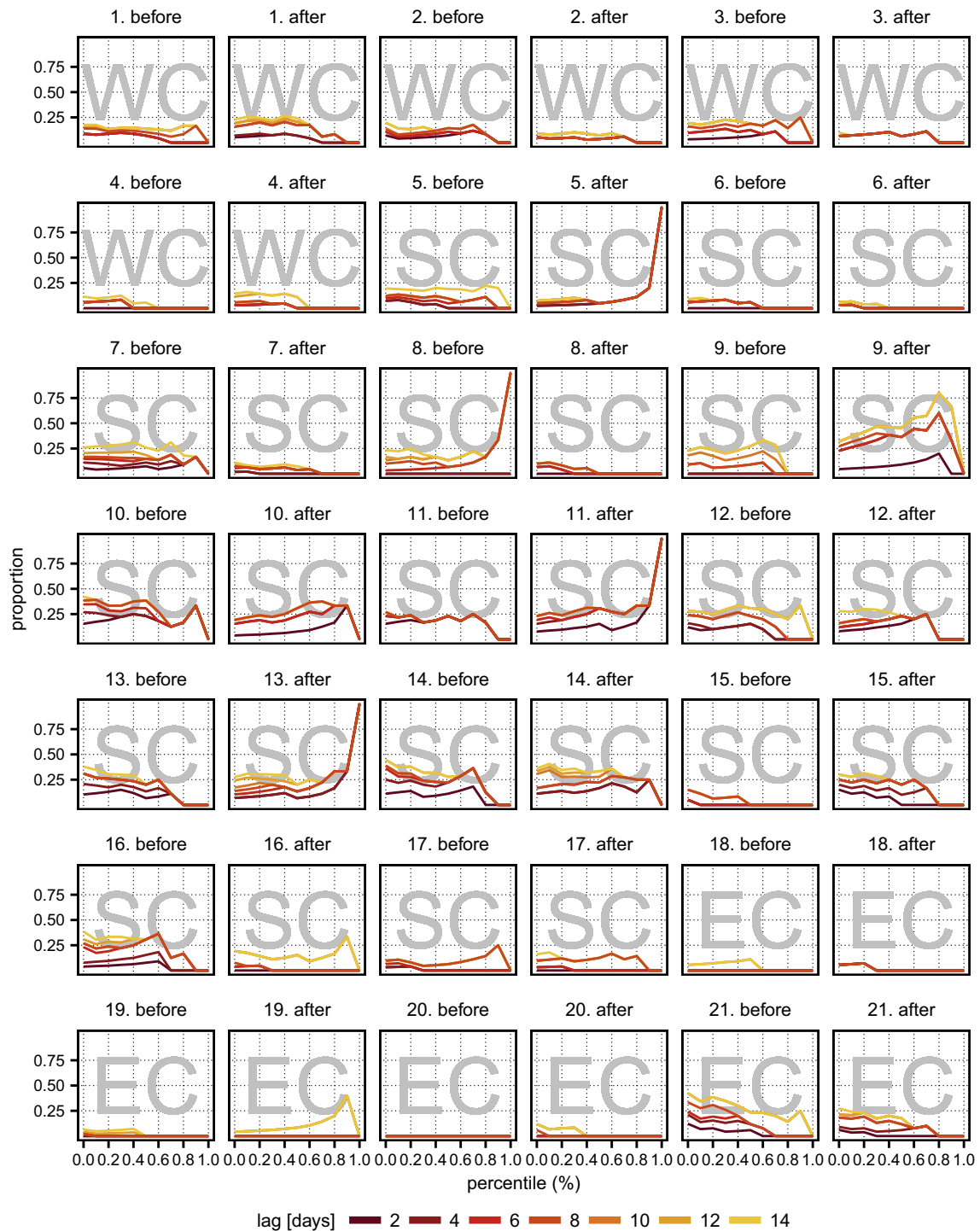


Fig. 4. Proportion of MHW co-occurrence between *in situ* and OISST datasets for each site where sites 1–4 represent the west coast (WC), sites 5–17 the south coast (SC) and 18–21 the east coast (EC). Columns denoted with “before” show the proportion of co-occurrence when events in the OISST data occurred on or before the dates of the *in situ* events. The columns denoted with “after” show the proportion of co-occurrence when OISST events occurred after the *in situ* event dates. The x-axis indicates the size of the events, based on percentiles, used for calculating the co-occurrence proportions. The days of lag used, from 2 to 14, are shown here in diminishing shades of red. The numbers above each panel show the ID number for each site. The names of the sites that relate to these ID numbers may be found in Figs. 2 and Table S1. (For interpretation of the references to color in this figure legend, the reader is referred to the web version of this article.)

The mean (\pm SD) proportion of MHWs that occurred during the second half of the shorter time series was 1.7 ± 1.3 ($p = 0.37$) and that of MCSs was 0.8 ± 0.6 ($p = 0.39$), neither being significantly different. The counts for both MHWs and MCSs between the first and second halves of the time series for the west and south coasts were significantly different. Showing agreement with the longer time series, the short west coast time series had significantly more

MHWs in their second half at 1.5 ± 0.6 ($p = 0.03$), but differed from the longer time series by having more MCSs in the second half at 1.8 ± 0.6 ($p < 0.01$). The short south coast time series showed agreement with the longer time series in that the proportion of MHWs in the second half of time series was greater at 2.1 ± 1.4 ($p < 0.01$) and the proportion of MCSs in the second half was lesser at 0.5 ± 0.3 ($p < 0.01$). The short east coast time series however,

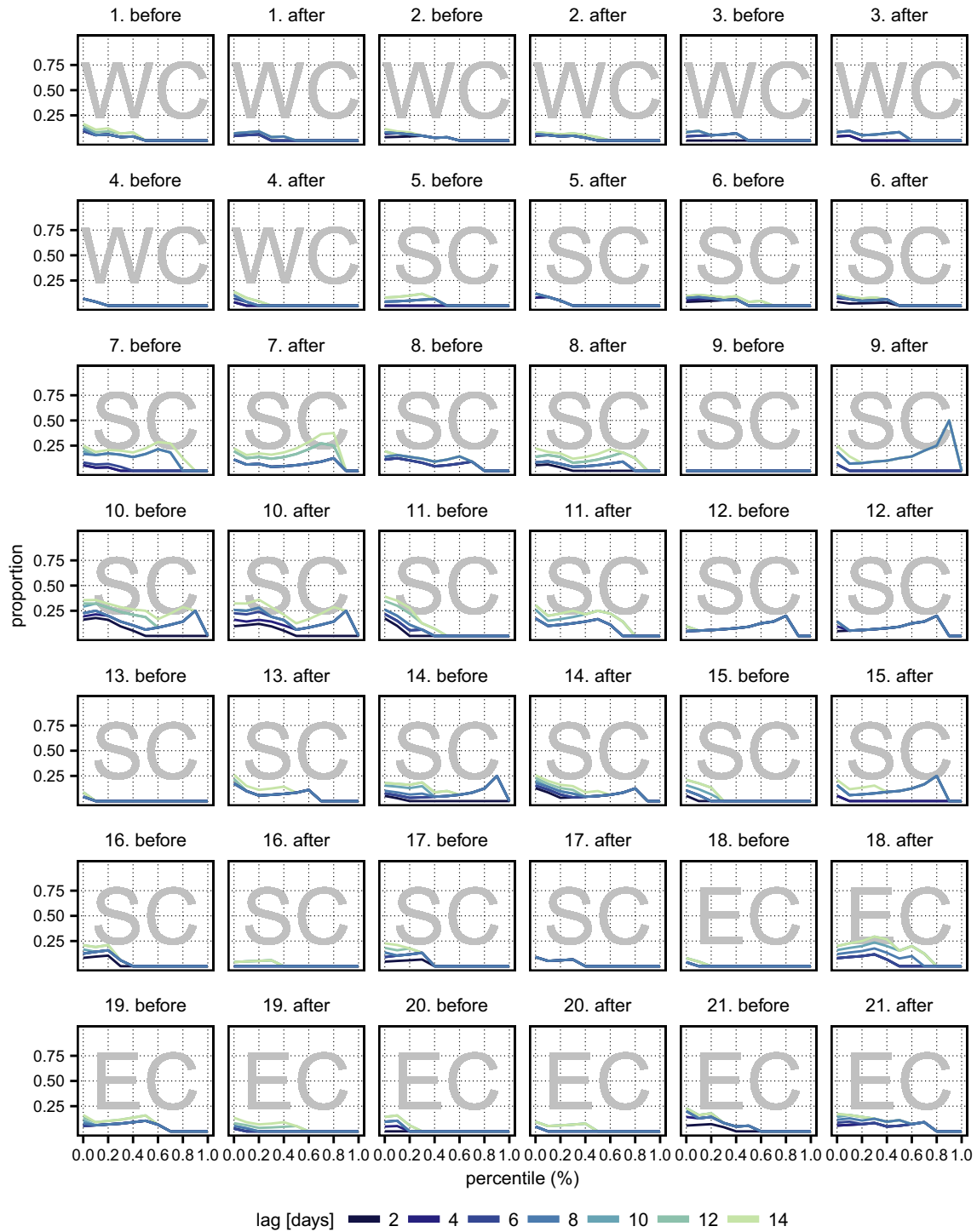


Fig. 5. Proportion of MCS co-occurrence between *in situ* and OISST datasets for each site as seen for MHWs in Fig. 4. The days of lag are shown here in diminishing shades of blue. (For interpretation of the references to color in this figure legend, the reader is referred to the web version of this article.)

showed no agreement with their longer counterparts. The proportion of MHWs in the second half of these short time series was 0.7 ± 0.4 ($p = 0.10$) and the proportion of MCSs was 1.0 ± 0.8 ($p = 0.57$).

3.5. Offshore MHWs and MCSs

As seen in Fig. 6, the pixels with the highest annual counts of MHWs occurred well south of the tip of the continent whereas some of the most frequent MCS activity was found

directly against the west coast and some small regions of the south coast. As for the duration of events, it is clear from Fig. 6 that the MHWs (MCSs) detected in the Agulhas current are relatively short-lived compared to those in the open ocean with almost all pixels that showed events in the upper range of duration detected well away from the coast. The offshore events along the west and south coasts have centers of intensity very near the shore whereas the east coast generally does not. The most intense events detected in the OISST data are found along or south of the south coast.

Table 4

The results of generalized linear models fitted to the MHW and MCS annual event data of each time series >30 years from the *in situ* (A) and OISST (B) datasets showing the change in extreme events over time. The ID column gives the ID number necessary to locate the site in Fig. 1 and may also be used to find the site name given in Table S1. The coast column shows within which coastal section the time series may be found. The trend columns show the decadal trends of increasing or decreasing extreme events. The R^2 columns shows the coefficients of determination for each general linear model and the p columns show the significance of the trend.

ID	Coast	MHW			MCS		
		Trend	R^2	p	Trend	R^2	p
<i>A – in situ</i>							
1	West	0.2	0.03	0.04	-0.5	0.09	0.00
2	West	-0.2	0.01	0.15	0.2	0.02	0.13
6	South	0.1	0.00	0.68	0.2	0.03	0.06
7	South	0.7	0.18	0.00	-0.2	0.02	0.13
<i>B – OISST</i>							
1	West	0.3	0.05	0.01	-0.2	0.03	0.05
2	West	0.1	0.00	0.55	0.1	0.00	0.57
3	West	0.0	0.00	0.91	0.2	0.02	0.05
4	West	0.1	0.01	0.37	-0.2	0.02	0.06
5	South	0.3	0.04	0.02	-0.6	0.14	0.00
6	South	0.5	0.09	0.00	-0.7	0.17	0.00
7	South	0.3	0.04	0.03	-0.6	0.12	0.00
8	South	0.4	0.07	0.00	-0.6	0.13	0.00
9	South	0.4	0.08	0.00	-0.7	0.19	0.00
10	South	0.3	0.05	0.01	-0.6	0.13	0.00
11	South	0.3	0.03	0.04	-0.4	0.07	0.00
12	South	0.2	0.03	0.05	-0.3	0.03	0.03
13	South	0.2	0.02	0.13	-0.2	0.02	0.08
14	South	0.2	0.02	0.13	-0.2	0.02	0.08
15	South	-0.0	0.00	0.75	0.0	0.00	0.71
16	South	-0.1	0.00	0.61	0.0	0.00	0.80
17	South	0.1	0.00	0.45	-0.4	0.04	0.01
18	East	0.3	0.05	0.01	-0.4	0.08	0.00
19	East	0.3	0.05	0.01	-0.4	0.08	0.00
20	East	0.2	0.02	0.06	-0.3	0.04	0.02
21	East	0.2	0.02	0.15	-0.7	0.16	0.00

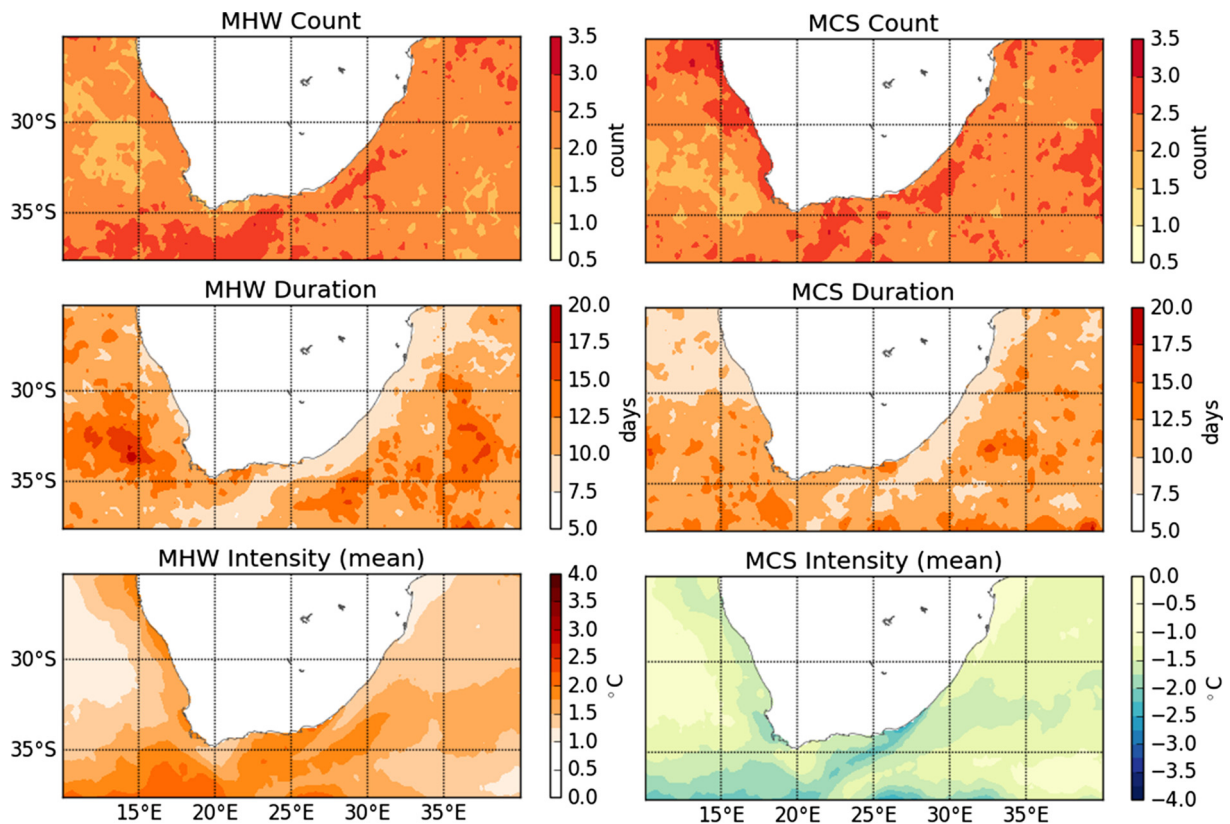


Fig. 6. Mean values from the annual data of each pixel from the OISST dataset around southern Africa. The first second and third rows show the mean count [n], duration [days] and intensity [°C] respectively of MHWs in the first column and MCSs in the second. The annual event values within each pixel were averaged to create one final value with which each pixel is populated.

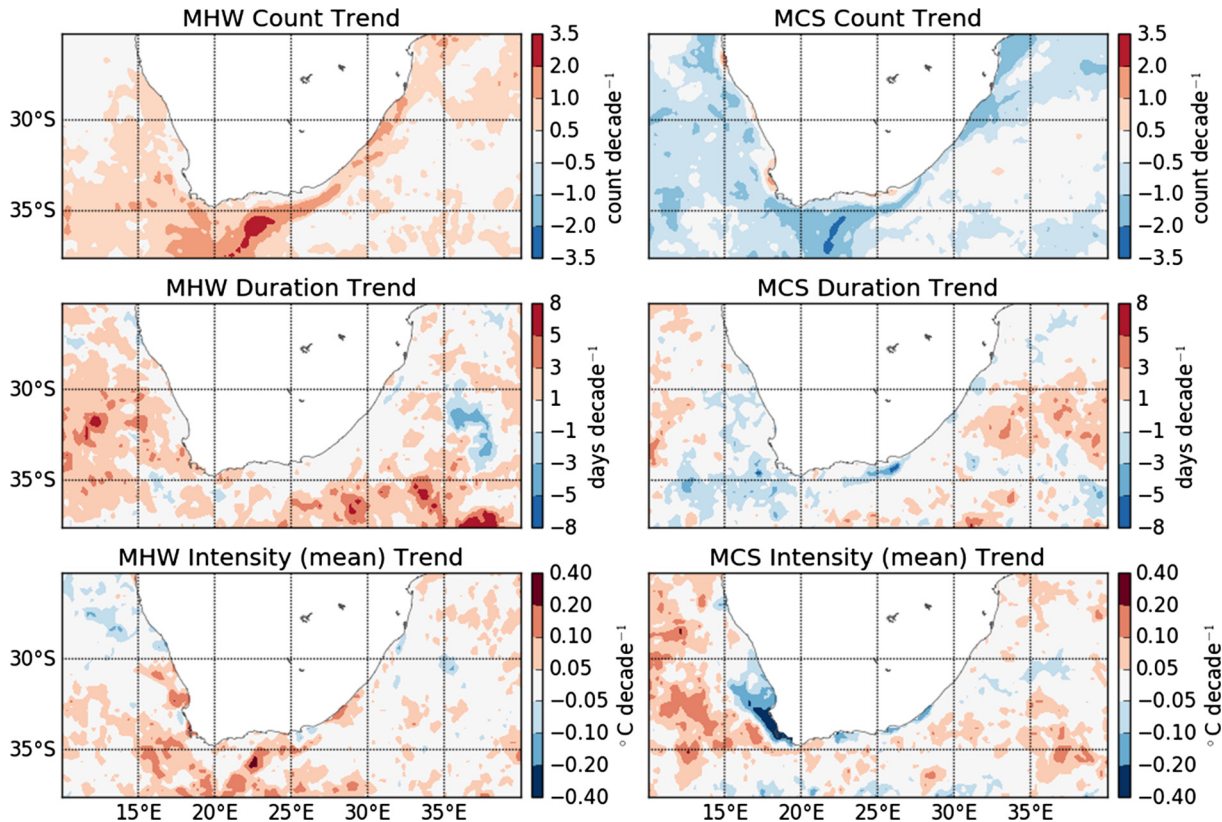


Fig. 7. Decadal trend values calculated from the annual OISST data around southern Africa. The decadal trends were calculated by fitting a linear model to the annual data of each pixel for the relevant metrics and multiplying the slope of the line by 10. The panels are in the same position as Fig. 6.

Whereas the mean count, duration and intensity of MHWs and MCSs offshore are telling, the picture is not complete without also considering the trend in these metrics, too. Fig. 7 shows that the count, duration and intensity of MHWs increased almost exclusively throughout the studied regions of the Indian and Atlantic Oceans. The count of MCSs decreased most rapidly along the coast of southern Africa with a couple of notable exceptions near Port Elizabeth and north of the Cape Peninsula where the count of MCSs increased very near to the coast. The duration of MCSs is seen to have generally increased further offshore with most of the near-shore region having changed little or decreased. The intensity of MCSs either changed little near the coast or increased dramatically, as seen in the dark blue spot north of the Cape Peninsula in the “MCS Intensity (mean) Trend” panel in Fig. 7.

4. Discussion

Our results clearly show that MHWs (MCSs) detected in two different ocean temperature datasets displayed markedly different counts, durations, intensities and timing in their occurrence. These differences appear to be related to the nature and variability of physical oceanographic processes at broad- and local-scales, and the coupling of the processes across these scales. These findings illustrate how a study of the properties of anomalous events can provide novel insights into drivers of the thermal regime along coastlines, and can be used to arrive at some mechanistic insights into the nature and origin of MHWs (MCSs).

4.1. Relation between local- and broad-scale MHWs and MCSs

The difference between the *in situ* and OISST datasets was striking. We anticipated a large degree of coupling between MHWs manifesting in datasets that encapsulate local- and broad-scale

patterns, as represented by the *in situ* and OISST datasets, respectively. We found instead that the broad-scale dataset yielded heatwaves that were more frequent and longer in duration, but less intense than their local-scale counterparts. Cold-spells, for which we expected a greater deal of decoupling between local- and broad-scale manifestations, showed more evidence of such than MHWs. MCSs were more frequent and lasted longer in the OISST data; however, the mean intensity of MCSs at the broad-scale was less than at the local-scale. The significantly larger intensities of both MHWs and MCSs from the *in situ* data may be an artifact of the inability of remotely sensed data to record the maximum and minimum temperatures that *in situ* instruments are capable of detecting (Smale and Wernberg, 2009).

Such a deterioration of the offshore thermal signal in coastal waters is known to occur due to the local modifications of near-shore circulation patterns by headlands, embayments, influences of the bathymetry and other such perturbations that introduce eddies and fronts and a shoaling of the thermocline (Okubo, 1973; Pingree and Maddock, 1979; Wolanski and Hamner, 1988; Black et al., 1990; Grundlingh and Largier, 1991; Graham and Largier, 1997). These processes are not yet fully understood, and what understanding we do have of physical oceanographic process remains weighted toward the mesoscale, as was noted by Graham and Largier (1997) in their study on upwelling shadows, another process responsible for the local modification of a phenomenon that is generally studied at the broad-scale. These local-scale deviations are known to affect coastal ecological processes, such as the transport, dispersal and settlement of larvae (Pineda, 1994; McCulloch and Shanks, 2003; Narváez et al., 2004) and the dynamics of phytoplankton and nutrient delivery (Graham and Largier, 1997; Pineda, 1994), and it is likely that thermal patterns over similar scales will also have local significance for nearshore biology.

4.2. MHWs and MCSs in different coastal sections

There was no difference in the annual count of events between coasts within each dataset (Table 1) but the duration and intensity metrics between coasts did differ. An important thing to note from Table 1 is that the MHWs and MCSs at both the local- and broad-scale on the east coast were significantly shorter in duration than other two coastal sections; however, comparing the event duration between events, we see that on this coast the cold-spells lasted longer than heatwaves in the OISST data. Furthermore, the east coast also displayed the least intense MHWs but most intense MCSs of any coastal section in the OISST dataset. This stretch of coastline is heavily influenced by the warm Agulhas Current, separated from the coast only by a very narrow and steep continental shelf, which abruptly expands into the >200 km wide Agulhas Bank south of Port Alfred (Fig. 1). This narrow continental slope margin allows upwelling on the shoreward side of the Agulhas Current to occur along the entire length of the east coast, independent of local atmospheric conditions (Lutjeharms et al., 2000). It is therefore possible that this constant forcing of the Agulhas Current on the east coast would cause the nearshore events arising there to be advected southwards, returning the local temperatures to 'normal' before other factors may have ended the event. This seems to be a plausible explanation for why the largest events, both hot and cold, recorded on the east coast are so much smaller than those along the other two coastal sections. We suggest that the hydrodynamic properties of the Agulhas Current have prevented any prolonged thermal events that originated locally from persisting. Contrary to this conclusion it is clear from the literature that some of the largest documented heatwaves have been caused by anomalously high heat content of ocean currents, such as the Leeuwin Current in the case of the Western Australia MHW (Feng et al., 2013; Pearce and Feng, 2013; Wernberg et al., 2013). Conversely, large MHWs such as that documented in the north west Atlantic Ocean in 2012 have been shown to be coupled strongly with atmospheric phenomena (Mills et al., 2012; Chen et al., 2014, 2015). Therefore, while no MHWs or MCSs with cumulative intensities rivaling those of the largest events seen on the other two coasts have yet occurred on the east coast, the potential exists for some further-afield phenomenon to cause such an event there.

Some of the *in situ* time series collected along the south coast are recorded in relatively shallow embayments, allowing for atmospheric heating to have a marked effect there – as is indeed seen in the cumulative intensities for MHWs in False Bay – and further offshore sheer-edge forcing creates eddies resulting from the departure of the Agulhas Current from the Agulhas Bank that may then be projected across the shelf (Lutjeharms et al., 2003). Such high temperature events last longer, and even if their mean intensities are lower, this contributes towards their high cumulative intensities. The significantly more intense nearshore MCSs on the south coast are attributed to the much greater mean intensity of events around Tsitsikamma (Sites 12–14). Without these three sites the nearshore MCSs on the south coast are not significantly greater than those along the other two coastal sections. Roberts (2005) hypothesized that a wind forced upwelling cell occurs near Tsitsikamma and the mean intensity of the events recorded here may support this.

The west coast does not show exceptional patterns in MHW and MCS metrics. At first glance, we were surprised to find that the mean intensity of west coast (an EBUS) coastal MCSs is lower than those on the south coast. Upwelling systems are defined by periodic occurrences of cold water of deep origin near the coast (Lutjeharms et al., 2000; Hutchings et al., 2009) and it seems intuitive to associate these with the cold-spells. But cold upwelled water defines the climatology for the region, and for a cold-spell to manifest in an upwelling region the temperature of that water

would have to be colder than the 90th percentile based on a 30-year climatological baseline period and would have to last for five or more days. Accordingly, upwelling events that occur within a seasonally predictable cycle are not anomalous in nature, and are therefore not flagged as MCSs. An upwelling event would need to be particularly cold or a-seasonal in its occurrence to be recorded as a MCS. This is certainly possible; however, the very nature of the required a-seasonality of MCSs obfuscates which phenomena may potentially be driving the extreme cold temperatures. This consideration casts doubt on our thoughts to use MCSs as a means to detect the intensification of upwelling, which is a plausible prediction in an age when Earth's climate gradually warms (García-Reyes et al., 2015). Results show that offshore MCS are, on average, lasting significantly longer, occurring significantly more often and the largest events are more intense. As upwelling is known to occur along the coast here (Hutchings et al., 2009), that the offshore MCSs occur more often and last longer is strong evidence that the MCS algorithm does not provide a good means for upwelling detection and that the coastal cold events detected here are likely due to other factors. Upwelling events should have notable properties, such as rate of onset and duration of peak intensity, which set them apart from other events that may cause colder water to occur at the surface. Further work on the definition of the characteristics of upwelling events could be coupled with the MCS algorithm for accurate use in upwelling detection in temperature time series.

4.3. Patterns in mean cumulative intensity

The pattern of mean cumulative intensity within the local-scale data was very clear in that warm and cold events on the south coast were much more extreme than those along the west and east coasts. The OISST data were less conclusive on whether the south or west coast experienced the most extreme events, but it is apparent from all of the analyses from both datasets that the east coast experienced very few extreme MHWs or MCSs. These findings suggest that the east coast is the most thermally stable of the three coastal sections, and that MHWs or MCSs with mean cumulative intensities that could potentially damage ecosystems are least prone to develop there. It is the south coast section, however, where coastal ecosystems are most at risk due to excessively warm events.

Within the south coast (Sites 5–17), the sites within False Bay (Sites 5–7) have greater cumulative intensities for MHWs and MCSs than the sites over the Agulhas Bank (Sites 8–17). Whereas the Agulhas Bank experiences more thermal variation than the other two coastal sections, False Bay, which is ~50 km across, is situated within the transition zone between the Benguela and Agulhas Currents (Smit et al., 2013) and contains the most variable time series in the entire *in situ* dataset. Lower resolution satellite temperature products, such as Pathfinder version 5.0, have been shown to inadequately resolve the SST within the relatively small body of water that is False Bay (Dufois and Rouault, 2012). Embayments such as this often display thermal ranges (both temporally and spatially) large enough to effect species ranges (Ling et al., 2009) and are of great ecological (Klumb et al., 2003) and economic importance (Lugendo et al., 2005). We think that such regions are also more prone to MHWs (and perhaps MCSs) due to an even stronger decoupling from broad-scale thermal patterns and drivers: indeed, two of the three largest MHWs and MCSs detected in the local-scale dataset were recorded within False Bay, whereas only one large MHW and no MCSs were detected there within the OISST dataset. This illustrates the problem of using satellite temperature data for coastal ecological applications, and emphasizes the need for more comprehensive coverage of nearshore ecosystems in long-term *in situ* seawater temperature monitoring programmes.

Although [Hobday et al. \(2016\)](#) provide caveats regarding the use of event metrics across datasets, we nevertheless feel that it would be informative to bring the heatwave metrics measured along the South African coast into context by comparing them with MHWs from other regions. Within the two coastal time series that experienced the most extreme events, Muizenberg and Mossel Bay, heatwaves had *on average* cumulative intensities ranging from 156.4 to 310.30 °C-days, mean intensities from 1.77 to 4.47 °C and lasted from 35 to 98 days. The lengths of these two time series were 40 and 29 years respectively, ensuring that enough data were used to create the climatologies against which these events were calculated. Of the three MHWs from other regions now known to have had major ecological consequences (see introduction), the 2003 Mediterranean MHW had a cumulative intensity of 122 °C-days, a mean intensity of 4.06 °C and a duration of 30 days; the 2011 Western Australia MHW had a cumulative intensity of 192 °C-days, a mean intensity of 3.21 and a duration of 60 days; the 2012 MHW in the north west Atlantic had a cumulative intensity of 145 °C-days, a mean intensity of 2.59 °C and a duration of 56 days ([Hobday et al., 2016](#)). Even though the metrics of these three events are comparable to those found in South Africa, no investigations have yet been done to see if similar negative effects have taken place at the sites where we have recorded intense heatwaves locally. It seems unlikely that any wide spread ecological changes occurred as evidence for such do not appear amongst the fisheries survey data collected annually, but a more detailed investigation is warranted to see if *some* of the ecological changes known for the south coast section ([Bolton et al., 2012](#)) can be linked to such events. Nevertheless, considering that the south coast is a 'hot-spot' for heatwaves, the fact that these events are increasing in count and knowledge that events already experienced in this section are already on par with the intensity and duration of similar events known to have had ecological effects elsewhere in the world, it is a matter of time before South Africa experiences a similar marine environmental 'natural' disaster.

4.4. Co-occurrence proportions

We found that the majority of the events in the paired time series between the two datasets were unrelated and that some other influence(s) could have had a more pronounced effect on the nearshore events than offshore temperatures. This finding is important in light of the very strong mismatch in temperatures recorded by thermal loggers installed *in situ* at the coast (i.e. local-scale) compared to measurements of the ocean's temperature from space (i.e. broad-scale) ([Smit et al., 2013](#)).

When isolating co-occurrence proportions between the datasets to OISST events preceding *in situ* events, we see that the proportions of co-occurrence for MCSs were much lower than for MHWs ([Figs. 4 and 5](#)). This shows that if co-occurring events are indeed related, more MHWs are being caused by mesoscale activity than MCSs, as was expected. Additionally, more MCSs from the OISST data were shown to occur after *in situ* MCSs for all coastal sections. This may suggest some local heat loss process, perhaps related to atmospheric cold events, cooling the waters near the coast, which then spread to waters further offshore. The co-occurrence proportions of OISST MHWs before and after *in situ* MHWs are similar, implying that MHWs may be just as likely to propagate onshore from offshore mesoscale activity as MHWs originating near the coast may seep offshore and affect the thermal regime there.

We also infer from the proportions of co-occurrence for time series on the south coast, which are generally much higher than the other two coasts, that the broad continental shelf of the Agulhas Bank is allowing greater levels of influence between the nearshore and offshore. We also see that there is a higher proportion of co-occurrence for the larger MHWs and MCSs on the south coast

when a lag window after the *in situ* event is applied. This supports the argument that events originating in the nearshore are propagating out onto the Agulhas Bank and affecting the oceanography there more often than offshore events originating on the Agulhas Bank are affecting the nearshore environment. However, the overall low rate of co-occurrence for all three coastal sections reinforces the argument that it is not the mesoscale phenomena of the open ocean abutting the southern African landmass that are driving the majority of events in the nearshore, nor are locally forced events propagating from the nearshore the main driver for offshore events.

The decline in the proportions of co-occurrence between datasets as the smaller events are screened out is strong evidence against the hypothesis that mesoscale activity, both warm and cold, is related to nearshore thermal events. The small increases in co-occurrence for some sites as only larger events were compared does imply that there is some relationship between the nearshore and offshore at some localities, but that some other variable (e.g. atmospheric forcing) may be having a greater effect on nearshore events.

Another important consideration is the co-occurrence of the events with the highest mean cumulative intensity within and between datasets. None of the dates for the top three MHWs or MCSs for any of the coastal sections from the *in situ* dataset are the same ([Table 3](#)). They are all individually different events occurring at different times. The OISST dataset tells an entirely different story in that all but one of the coastal sections, for both MHWs and MCSs, have at least two of their three top events occurring at the same time. This means that the largest events detected in the OISST dataset occur over a broad area at the same time, whereas the *in situ* events are isolated temporally and spatially. This further reinforces our conclusion that the events detected by the different datasets are often intrinsically different from one another.

A final consideration to address for the apparent lack of relation between these datasets is that the OISST temperatures are remotely sensed representations of the surface and though they are converted from a "skin" temperature (roughly a micron deep) to a "bulk" temperature (roughly half a meter deep) ([Reynolds et al., 2007](#)), 7 of the 21 time series from the *in situ* dataset were recorded deeper than this with 2 of them recorded deeper than 10 m. However, these deeper *in situ* data are still comparable to the "bulk" upper mixed layer the OISST data are calibrated to measure as there is little vertical layering within the nearshore environment. Furthermore, the OISST temperatures are averaged across the width of the continental shelf at each site, and not simply to the nearest available pixel, largely addressing any inconsistencies in temperature caused by mismatches in depth as the mixed layer of the mesoscale temperature patterns of the open ocean should be comparable in depth to the nearshore water column. It is then worth noting that water temperatures being measured in the *in situ* dataset represent the area where the nearshore biota are living, and is better able to reflect what temperature patterns/exposure these flora and fauna experience. Therefore two datasets are necessary: one for the coast; one for the ocean. The aim is not to compare the accuracy of the two datasets to detect the same events, rather this study aims to show that fundamentally different outcomes exist, and that in order to show the vulnerability of nearshore ecosystems to climate change, an appropriate dataset must be used.

4.5. Climate change

Although all but four of the *in situ* time series used in this investigation are too short to draw adequate conclusions on the decadal trends seen in MHWs and MCSs, the OISST time series are long enough. As hypothesized, these data show positive decadal trends

for the annual occurrence MHWs and negative trends for MCSs. This means that over the past 33 years of satellite observation, more MHWs have been occurring every decade for each coastal section while the occurrence of MCSs has been decreasing. Whereas the literature surrounding the potential increase (decrease) of MHWs (MCSs) in the ocean is still in its infancy, atmospheric scientists have been investigating the shift in the occurrence of extreme events for over a decade. Both historic and modelled research shows that climate change is leading to an increase of extreme hot events in the atmosphere (Easterling et al., 2000; Perkins and Alexander, 2013), and decreasing extreme cold events (Meehl, 2004). It is not surprising to find the same pattern in the ocean as seen Fig. 7.

Though less conclusive than the trends calculated from the longer time series, similar patterns were found in the shorter *in situ* time series as well. As the algorithm used to calculate these events is based on percentiles, it stands to reason that as the mean temperature of the oceans has been increasing by roughly 0.1 °C per decade on average over the past several decades (Stocker et al., 2013), there will be an increase in the occurrence of MHWs and a decrease in MCSs. The gradual mean increase in temperature will cause the algorithm used here to be biased in its detection of MHWs as time progresses because temperatures are generally warmer in the later half of the time series. It is then important to note that the usefulness of the MHW (MCS) algorithm is not limited to the detection of the increase or decrease of the occurrence of events, but also to measuring the duration a region spends in an extremely warm (cold) state and how that may change over time.

5. Conclusion

It is our experience with these data that every time series used from both datasets experienced, on average, at least one MHW and MCS per year. Within each dataset, but not between, the count of events is similar for each coastal section, regardless of the local oceanographic and geographic properties. Instead, it is the duration, mean intensity and also the derived cumulative intensity of the events occurring on the different coastal sections that most clearly define spatial differences – so much so, that this will almost certainly translate to different rates of vulnerabilities of coastal sections, both the ecosystems and the humans that derive benefit from them, to the ravages of climate change. As the proportion of co-occurrence of events between the local- and broad-scale dataset are generally low, and the magnitude of events within the different datasets differ significantly from one another, we infer that some other force outside of mesoscale temperature phenomena is contributing to nearshore events. We think that direct atmospheric forcing of coastal thermal heating is one such driver that needs immediate research attention in order to better understand what is driving the occurrence and intensity of these events.

Of the metrics presented in this paper, cumulative intensity is perhaps the most important ecologically. As a product of the intensity and duration of an event, we propose that cumulative intensity may be used as an index to measure the threat of thermal events to coastal ecosystems. Future research conducted on damaging MHWs and MCSs will be able to record the cumulative temperature above the seasonal average experienced by the ecosystem in question. As the body of research on extreme events increases, the aggregated cumulative intensity values may be used to establish a global index of the thresholds for different ecosystems at which ecological perturbations, impairment or destruction have occurred. Combined with near real time monitoring, this metric may then be used to improve the decision making process on how when and how best to respond to unusually warm or cold bodies of water. Furthermore, we found in this study that the

cumulative intensity of events at the coast were not only greater than the corresponding OISST events, but that the upper range was much greater.

We have provided a cursory look at an oceanographic basis for explaining these differences, but we think that there is an urgent need to consider more carefully the complex local-scale modifications of broader-scale patterns seen further afield in order to fully appreciate the drivers of coastal thermal variability in space and time. That such studies are still lacking in an age when the pulse of the global ocean is measured with exquisite precision is a reflection on the oceanographic community's ongoing preoccupation with mainly broad-scale open ocean patterns and processes. Globally comprehensive ocean temperatures are made available almost in real time, but to the best of our knowledge the top coastal temperature databases are all comprised of records retrieved from delayed-mode instruments. In the latter case, near-real-time warnings of the onset and intensity of MHWs (or MCSs) are not yet feasible, whereas it is already possible to develop and implement such warning systems using currently-available gridded satellite SST products. Researchers in the tropics, on coral reefs specifically, are already doing just this as they implement (near) real-time satellite data for the monitoring of coral bleaching (e.g. <http://coralreefwatch.noaa.gov/satellite/index.php>). Other coastal communities should learn from the work of tropical communities in implementing monitoring systems for extreme temperatures, which is now becoming relevant as climate change is threatening previously (relatively) stable ecosystems, such as temperate kelp forests (Wernberg et al., 2016). We therefore feel that there is a need to begin implementing near-real-time monitoring systems so that we may track the benefits of these systems in terms of prediction, detection and mitigation of the potential damage caused by extreme events. Furthermore, we propose that the focus of this implementation be on nearshore ecosystems as these are disproportionately more important to human livelihoods as well as being at greater risk generally than other marine ecosystems.

Acknowledgements

We would like to thank DAFF, DEA, EKZNSW, KZNSB, SAWS and SAEON for contributing all of the raw data used in this study. Without it, this article and the South African Coastal Temperature Network (SACTN) would not be possible. This research was supported by a South African National Research Foundation Grant (CPRR14072378735) and by the Australian Research Council (FT110100174). This paper makes a contribution to the objectives of the Australian Research Council Centre of Excellence for Climate System Science (ARCCSS). The authors report no financial conflicts of interests. The data and analyses used in this paper may be found at <https://github.com/schrob040/MHW>.

Appendix A. Supplementary material

Further meta-data for each time series and source listed in geographic order along the South African coast from the border of Namibia to the border of Mozambique may be found in Table S1. Supplementary data associated with this article can be found, in the online version, at <http://dx.doi.org/10.1016/j.pocan.2017.01.004>.

References

- Alexander, L.V., Zhang, X., Peterson, T.C., Caesar, J., Gleason, B., Klein Tank, A.M.G., Haylock, M., Collins, D., Trewin, B., Rahimzadeh, F., Tagipour, A., Rupa Kumar, K., Revadekar, J., Griffiths, G., Vincent, L., Stephenson, D.B., Burn, J., Aguilar, E., Brunet, M., Taylor, M., New, M., Zhai, P., Rusticucci, M., Vazquez-Aguirre, J.L., 2006. Global observed changes in daily climate extremes of temperature and precipitation. *J. Geophys. Res.: Atmos.* 111 (D5), D05109.

- Benthuisen, J., Feng, M., Zhong, L., 2014. Spatial patterns of warming off Western Australia during the 2011 Ningaloo Niño: quantifying impacts of remote and local forcing. *Cont. Shelf Res.* 91, 232–246.
- Black, E., Blackburn, M., Harrison, R.G., Hoskins, B.J., Methven, J., 2004. Factors contributing to the summer 2003 European heatwave. *Weather* 59 (8), 217–223.
- Black, K.P., Gay, S.L., Andrews, J.C., 1990. Residence times of neutrally-buoyant matter such as larvae, sewage or nutrients on coral reefs. *Coral Reefs* 9 (3), 105–114.
- Bolton, J.J., Anderson, R.J., Smit, A.J., Rothman, M.D., 2012. South African kelp moving eastwards: the discovery of *Ecklonia maxima* (Osbeck) Papenfuss at De Hoop Nature Reserve on the south coast of South Africa. *Afr. J. Mar. Sci.* 34 (1), 147–151.
- Bond, N.A., Cronin, M.F., Freeland, H., Mantua, N., 2015. Causes and impacts of the 2014 warm anomaly in the NE Pacific. *Geophys. Res. Lett.* 42 (9), 3414–3420.
- Castillo, K.D., Lima, F.P., 2010. Comparison of *in situ* and satellite-derived (MODIS-Aqua/Terra) methods for assessing temperatures on coral reefs. *Oceanogr. Methods* 8, 107–117.
- Chen, K., Gawarkiewicz, G., Kwon, Y.-O., Zhang, W.G., 2015. The role of atmospheric forcing versus ocean advection during the extreme warming of the Northeast U.S. continental shelf in 2012. *J. Geophys. Res.: Oceans* 120, 1–16.
- Chen, K., Gawarkiewicz, G.G., Lentz, S.J., Bane, J.M., 2014. Diagnosing the warming of the Northeastern U.S. Coastal Ocean in 2012: a linkage between the atmospheric jet stream variability and ocean response. *J. Geophys. Res.: Oceans* 119 (1), 218–227.
- Crisp, D.J., 1964. The effects of the severe winter of 1962–63 on marine life in Britain. *J. Anim. Ecol.* 33 (1), 165–210.
- DeCastro, M., Gómez-Gesteira, M., Costoya, X., Santos, F., 2014. Upwelling influence on the number of extreme hot SST days along the Canary upwelling ecosystem. *J. Geophys. Res.: Oceans* 119 (5), 3029–3040.
- Deser, C., Alexander, M.A., Xie, S.P., Phillips, A.S., 2010. Sea surface temperature variability: patterns and mechanisms. *Ann. Rev. Mar. Sci.* 2, 115–143.
- Dufois, F., Rouault, M., 2012. Sea surface temperature in False Bay (South Africa): towards a better understanding of its seasonal and inter-annual variability. *Cont. Shelf Res.* 43, 24–35.
- Easterling, D.R., Meehl, G.A., Parmesan, C., Changnon, S.A., Karl, T.R., Mearns, L.O., 2000. Climate extremes: observations, modeling, and impacts. *Science* 289 (5487), 2068–2074.
- Feng, M., McPhaden, M.J., Xie, S.-P., Hafner, J., 2013. La Niña forces unprecedented Leeuwin Current warming in 2011. *Sci. Rep.* 3, 1277.
- Firth, L.B., Knights, A.M., Bell, S.S., 2011. Air temperature and winter mortality: implications for the persistence of the invasive mussel, *Perna viridis* in the intertidal zone of the south-eastern United States. *J. Exp. Mar. Biol. Ecol.* 400 (1–2), 250–256.
- Firth, L.B., Mieszowska, N., Grant, L.M., Bush, L.E., Davies, A.J., Frost, M.T., Moschella, P.S., Burrows, M.T., Cunningham, P.N., Dye, S.R., Hawkins, S.J., 2015. Historical comparisons reveal multiple drivers of decadal change of an ecosystem engineer at the range edge. *Ecol. Evol.* 5 (15), 3210–3222.
- Fischer, E.M., Lawrence, D.M., Sanderson, B.M., 2011. Quantifying uncertainties in projections of extremes – a perturbed land surface parameter experiment. *Clim. Dyn.* 37 (7–8), 1381–1398.
- Fischer, E.M., Schär, C., 2010. Consistent geographical patterns of changes in high-impact European heatwaves. *Nat. Geosci.* 3 (6), 398–403.
- García-Reyes, M., Sydeman, W.J., Schoeman, D.S., Rykaczewski, R.R., Black, B.A., Smit, A.J., Bograd, S.J., 2015. Under pressure: climate change, upwelling, and eastern boundary upwelling ecosystems. *Front. Mar. Sci.* 2 (109), 1–10.
- Garrabou, J., Coma, R., Bensoussan, N., Bally, M., Chevaldonné, P., Cigliano, M., Diaz, D., Harmelin, J.G., Gambi, M.C., Kersting, D.K., Ledoux, J.B., Lejeune, C., Linares, C., Marschal, C., Pérez, T., Ribes, M., Romano, J.C., Serrano, E., Teixido, N., Torrents, O., Zabala, M., Zuberer, F., Cerrano, C., 2009. Mass mortality in Northwestern Mediterranean rocky benthic communities: effects of the 2003 heat wave. *Glob. Change Biol.* 15 (5), 1090–1103.
- Gershunov, A., Douville, H., 2008. Extensive summer hot and cold extremes under current and possible future climatic conditions: Europe and North America. In: Diaz, H.F., Murnane, R.J. (Eds.), *Climate Extremes and Society*. Cambridge University Press, Cambridge, United Kingdom, pp. 74–98 (Chapter 5).
- Glickman, T.S., 2000. *Glossary of Meteorology*. American Meteorological Society, Boston, USA.
- Graham, W.M., Largier, J.L., 1997. Upwelling shadows as nearshore retention sites: the example of northern Monterey Bay. *Cont. Shelf Res.* 17 (5), 509–532.
- Grundlingh, M.L., Largier, J.L., 1991. Physical oceanography of False Bay – a review. *Trans. Roy. Soc. S. Afr.* 47, 387–400.
- Gunter, G., 1941. Death of fishes due to cold on the Texas coast, January, 1940. *Ecology* 22 (2), 203–208.
- Gunter, G., 1951. Destruction of fishes and other organisms on the south Texas coast by the cold wave of January 28–February 3, 1951. *Ecology* 32 (4), 731–736.
- Hobday, A.J., Alexander, L.V., Perkins, S.E., Smale, D.A., Straub, S.C., Oliver, E.C., Benthuisen, J.A., Burrows, M.T., Donat, M.G., Feng, M., Holbrook, N.J., Moore, P.J., Scannell, H.A., Sen Gupta, A., Wernberg, T., 2016. A hierarchical approach to defining marine heatwaves. *Prog. Oceanogr.* 141, 227–238.
- Holt, S.A., Holt, G.J., 1983. Cold death of fishes at Port Aransas, Texas: January 1982. *Southwest. Naturalist* 28 (4), 464–466.
- Hothorn, T., Bretz, F., Westfall, P., 2008. Simultaneous inference in general parametric models. *Biometrical J.* 50 (3), 346–363.
- Hutchings, L., van der Lingen, C.D., Shannon, L.J., Crawford, R.J.M., Verheye, H.M.S., Bartholomae, C.H., van der Plas, A.K., Louw, D., Kreiner, A., Ostrowski, M., Fidel, Q., Barlow, R.G., Lamont, T., Coetzee, J., Shillington, F., Veitch, J., Currie, J.C., Monteiro, P.M.S., 2009. The Benguela Current: an ecosystem of four components. *Prog. Oceanogr.* 83 (1–4), 15–32.
- Jentsch, A., Kreyling, J., Beierkuhnlein, C., 2007. A new generation of climate-change experiments: events, not trends. *Front. Ecol. Environ.* 5 (6), 315–324.
- Klumb, R.A., Rudstam, L.G., Mills, E.L., Schneider, C.P., Sawyko, P.M., 2003. Importance of Lake Ontario embayments and nearshore habitats as nurseries for larval fishes with emphasis on alewife (*Alosa pseudoharengus*). *J. Great Lakes Res.* 29 (1), 181–198.
- Kreyling, J., Beierkuhnlein, C., Ellis, L., Jentsch, A., 2008. Invasibility of grassland and heath communities exposed to extreme weather events additive effects of diversity resistance and fluctuating physical environment. *Oikos* 117 (10), 1542–1554.
- Lima, F.P., Wetthey, D.S., 2012. Three decades of high-resolution coastal sea surface temperatures reveal more than warming. *Nat. Commun.* 3, 704.
- Ling, S.D., Johnson, C.R., Ridgway, K., Hobday, A.J., Haddon, M., 2009. Climate-driven range extension of a sea urchin: inferring future trends by analysis of recent population dynamics. *Glob. Change Biol.* 15 (3), 719–731.
- Lirman, D., Schopmeyer, S., Manzello, D., Gramer, L.J., Precht, W.F., Muller-Karger, F., Banks, K., Barnes, B., Bartels, E., Bourque, A., Byrne, J., Donahue, S., Duquesnel, J., Fisher, L., Gilliam, D., Hendee, J., Johnson, M., Maxwell, K., McDevitt, E., Monty, J., Rueda, D., Ruzicka, R., Thanner, S., 2011. Severe 2010 cold-water event caused unprecedented mortality to corals of the Florida reef tract and reversed previous survivorship patterns. *PLoS ONE* 6 (8).
- Lugendo, B.R., Pronker, A., Cornelissen, I., de Groene, A., Nagelkerken, I., Dorenbosch, M., van der Velde, G., Mgaya, Y.D., 2005. Habitat utilisation by juveniles of commercially important fish species in a marine embayment in Zanzibar, Tanzania. *Aquat. Living Resour.* 18 (2), 149–158.
- Lüning, K., Yarish, C., Kirkman, H., 1990. *Seaweeds: their environment, biogeography and ecophysiology*. John Wiley and Sons, New York, USA.
- Lutjeharms, J.R.E., Cooper, J., Roberts, M., 2000. Upwelling at the inshore edge of the Agulhas Current. *Cont. Shelf Res.* 20 (7), 737–761.
- Lutjeharms, J.R.E., Penven, P., Roy, C., 2003. Modelling the shear edge eddies of the southern Agulhas Current. *Cont. Shelf Res.* 23 (11–13), 1099–1115.
- Mackenzie, B.R., Schiedek, D., 2007. Daily ocean monitoring since the 1860s shows record warming of northern European seas. *Glob. Change Biol.* 13 (7), 1335–1347.
- Marsh, H., O'Shea, T.J., Best, R.C., 1986. Research on Sirenians. *Ambio* 15 (3), 177–180.
- Matthes, H., Rinke, A., Dethloff, K., 2015. Recent changes in Arctic temperature extremes: warm and cold spells during winter and summer. *Environ. Res. Lett.* 10 (11), 114020.
- McCulloch, A., Shanks, A.L., 2003. Topographically generated fronts, very nearshore oceanography and the distribution and settlement of mussel larvae and barnacle cyprids. *J. Plankton Res.* 25 (11), 1427–1439.
- Meehl, G.A., 2004. More intense, more frequent, and longer lasting heat waves in the 21st century. *Science* 305 (5686), 994–997.
- Mills, K.E., Pershing, A.J., Brown, C.J., Chen, Y., Chiang, F., Holland, D.S., Lehuta, S., Nye, J.A., Sun, J.C., Thomas, A.C., Wahle, R.A., 2012. Fisheries management in a changing climate: lessons from the 2012 ocean heat wave in the Northwest Atlantic. *Oceanography* 26 (2), 191–195.
- Narváez, D.A., Poulin, E., Leiva, G., Hernández, E., Castilla, J.C., Navarrete, S.A., 2004. Seasonal and spatial variation of nearshore hydrographic conditions in central Chile. *Cont. Shelf Res.* 24 (2), 279–292.
- Okubo, A., 1973. Effect of shoreline irregularities on streamwise dispersion in estuaries and other embayments. *Neth. J. Sea Res.* 6 (1–2), 213–224.
- Olita, A., Sorgente, R., Natale, S., Gaberssek, S., Ribotti, A., Bonanno, A., Patti, B., 2007. Effects of the 2003 European heatwave on the Central Mediterranean Sea: surface fluxes and the dynamical response. *Ocean Sci.* 3 (2), 273–289.
- O'Shea, T.J., Beck, C.A., Bonde, R.K., Kochman, H.I., Odell, D.K., 1985. An analysis of manatee mortality patterns in Florida, 1976–81. *J. Wildl. Manage.* 49 (1), 1–11.
- Pearce, A.F., Feng, M., 2013. The rise and fall of the marine heat wave off Western Australia during the summer of 2010/2011. *J. Mar. Syst.*, 139–156.
- Perkins, S.E., Alexander, L.V., 2013. On the measurement of heat waves. *J. Clim.* 26 (13), 4500–4517.
- Pineda, J., 1994. Internal tidal bores in the nearshore: warm-water fronts, seaward gravity currents and the onshore transport of neustonic larvae. *J. Mar. Res.* 52 (3), 427–458.
- Pingree, R.D., Maddock, L., 1979. The tidal physics of headland flows and offshore tidal bank formation. *Mar. Geol.* 32 (3–4), 269–289.
- Rehage, J.S., Blanchard, J.R., Boucek, R.E., Lorenz, J.J., Robinson, M., 2016. Knocking back invasions: variable resistance and resilience to multiple cold spells in native vs. nonnative fishes. *Ecosphere*, e01268.
- Reynolds, R.W., Smith, T.M., Liu, C., Chelton, D.B., Casey, K.S., Schlax, M.G., 2007. Daily high-resolution-blended analyses for sea surface temperature. *J. Clim.* 20 (22), 5473–5496.
- Roberts, M.J., 2005. Chokka squid (*Loligo vulgaris reynaudii*) abundance linked to changes in South Africa's Agulhas Bank ecosystem during spawning and the early life cycle. *ICES J. Mar. Sci.* 62 (1), 33–55.
- Schlegel, R.W., Smit, A.J., 2016. Climate change in coastal waters: time series properties affecting trend estimation. *J. Clim.* 29 (24), 9113–9124.
- Selig, E.R., Casey, K.S., Bruno, J.F., 2010. New insights into global patterns of ocean temperature anomalies: implications for coral reef health and management. *Glob. Ecol. Biogeogr.* 19, 397–411.

- Smale, D.A., Wernberg, T., 2009. Satellite-derived SST data as a proxy for water temperature in nearshore benthic ecology Peer reviewed article. *Mar. Biol.* 387, 27–37.
- Smit, A.J., Roberts, M., Anderson, R.J., Dufois, F., Dudley, S.F.J., Bornman, T.G., Olbers, J., Bolton, J.J., 2013. A coastal seawater temperature dataset for biogeographical studies: large biases between *in situ* and remotely-sensed data sets around the coast of South Africa. *PLoS ONE* 8 (12).
- Stocker, T., Qin, D., Plattner, G.K., Tignor, M., Allen, S.K., Boschung, J., Nauels, A., Xia, Y., Bex, V., Midgley, P.M. (Eds.), 2013. *Climate Change 2013: The Physical Science Basis: Working Group I Contribution to the Fifth Assessment Report of the Intergovernmental Panel on Climate Change*. Cambridge University Press, Cambridge, United Kingdom and New York, NY, USA.
- Sura, P., 2011. A general perspective of extreme events in weather and climate. *Atmos. Res.* 101 (1–2), 1–21.
- Wernberg, T., Bennett, S., Babcock, R.C., de Bettignies, T., Cure, K., Depczynski, M., Dufois, F., Fromont, J., Fulton, C.J., Hovey, R.K., Harvey, E.S., Holmes, T.H., Kendrick, G.A., Radford, B., Santana-Garcon, J., Saunders, B.J., Smale, D.A., Thomsen, M.S., Tuckett, C.A., Tuya, F., Vanderklift, M.A., Wilson, S., 2016. Climate-driven regime shift of a temperate marine ecosystem. *Science* 353 (6295), 169–172.
- Wernberg, T., Russell, B.D., Moore, P.J., Ling, S.D., Smale, D.A., Campbell, A., Coleman, M.A., Steinberg, P.D., Kendrick, G.A., Connell, S.D., 2011. Impacts of climate change in a global hotspot for temperate marine biodiversity and ocean warming. *J. Exp. Mar. Biol. Ecol.* 400 (1–2), 7–16.
- Wernberg, T., Smale, D.A., Tuya, F., Thomsen, M.S., Langlois, T.J., de Bettignies, T., Bennett, S., Rousseaux, C.S., 2013. An extreme climatic event alters marine ecosystem structure in a global biodiversity hotspot. *Nat. Clim. Change* 3 (1), 78–82.
- Wolanski, E., Hamner, W.M., 1988. Topographically controlled fronts in the ocean and their biological influence. *Science* 241 (4862), 177–181.
- Woodward, F.I., 1987. *Climate and Plant Distribution*. Cambridge University Press, Cambridge, United Kingdom.